



NadieMeLlamaGallina.com

Porque Yo Lo Reparo

Step by step tutorial: of Samsung Galaxy Grand Neo Touch screen

For this tutorial you will need the following spared parts and tools that you cant get at our online store Impextrom.com
Click on a tool for visit the website.



Pinza antiestática
curva Baku ESD BK-
15

3,50 €



Opening tool
Smartphone, tablet

2,19 €



Terminal opening
tool, plastic

0,71 €



Special SAT 0.75mm
high friction PVC pick

1,07 €



Screwdriver phillips
Head Size 00

1,06 €



Electrical dissipating
clamps, in blister

3,97 €

Step 1 - Back cover

Before starting make sure that the mobile is turned off.

Remove the back cover with the opening tool, this will avoid scratching the case.



Step 2 - Battery

Remove the battery by pulling on the bottom.



Step 3 - SIM card

Retire to (s) SIM card (s).





Step 4 - Micro SD card

Remove the micro SD card.



Step 5 - Intermediate housing

Remove the 12 Phillips screws that hold the middle housing.



Step 6

Disassemble the intermediate housing, loosening the plastic notches with the opening tool.





Step 7 - Front camera

Remove the front camera, disconnecting it from the motherboard and gently pulling on it.



Step 8 - Audio connector

Disconnect the flex cable from the motherboard.



Step 9 - Flex volume buttons

Disconnect the flex cable from the motherboard, by pulling on the tab of the connector and gently pulling on the cable.



Step 10 - Power button flex

Repeat the process with the flex of the power button, located on the opposite side.



Step 11 - Motherboard

Unplug the data cable from the screen and detach the headset from the chassis.

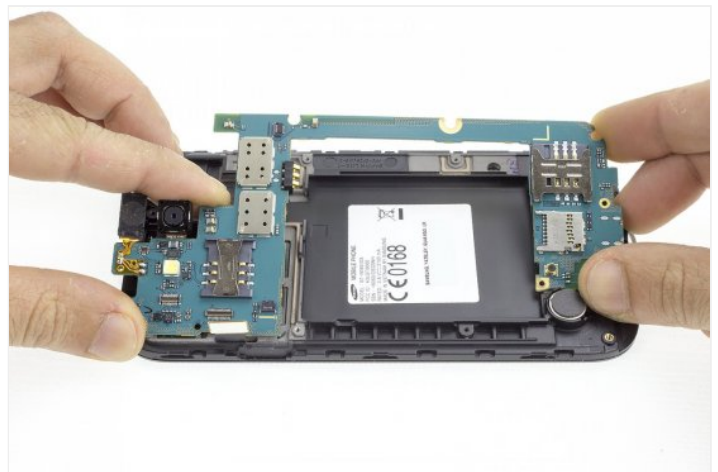
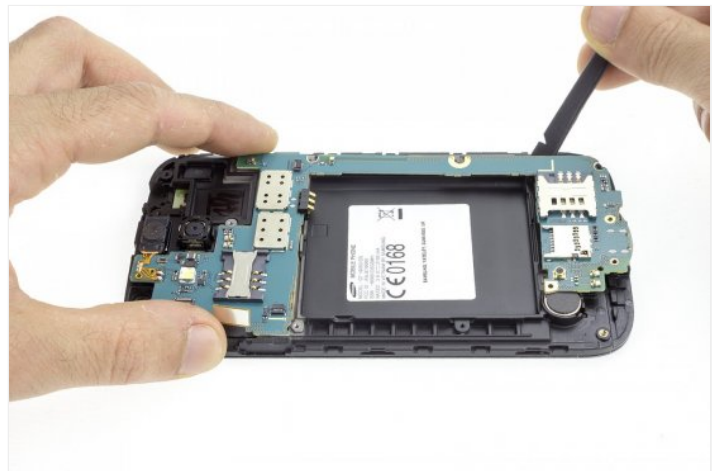




Step 12

Remove the Phillips screw that holds the plate.

Separate the plate from the chassis.





Step 13

Disconnect the flex cable, by pulling on the tab of the connector and gently pulling on it.





Step 14

Take off the connector located at the bottom, which belongs to the home button.



Step 15 - HOT GLASS

Insert the HOT GLASS in the microwave for the time specified in the instructions for use.

If you heat it too long, the gel inside will expand and the bag will be inflated until the content is poured.

It is advisable to interrupt every 15 seconds and distribute the heat with your hands.



Step 16 - Touch screen

Apply heat to the screen for a couple of minutes.



Step 17

Insert the tip of the tine behind the glass and go around the contour of the phone to detach the adhesive.



Step 18

Separate the lower part, carefully passing the flex cable of the home button.





Step 19

Separate the upper part by passing the data flex.



Step 20

Peel off the flex from the front buttons.



Step 21

Finally, separate the "Home" key.

