



**NadieMeLlamaGallina.com**

Porque Yo Lo Reparo

## Step by step tutorial: of BQ Aquaris 5´7 Motherboard

For this tutorial you will need the following spared parts and tools that you cant get at our online store [Impextrom.com](http://Impextrom.com)  
Click on a tool for visit the website.



Opening tool  
Smartphone, tablet

2,19 €



Terminal opening  
tool, plastic

0,71 €



Special SAT 0.75mm  
high friction PVC pick

1,07 €



Screwdriver phillips  
Head Size 00

1,06 €



Professional fine  
point tweezers, ST-10

3,17 €

### Step 1 - Back cover

Before starting make sure the phone is switched off.

Open the back cover with the opening tool, this will prevent scratches or damage.



## Step 2

Separate the back cover.



## Step 3 - Battery

Remove the battery by pulling on the bottom.





#### Step 4 - SIM card

Remove the SIM card by pulling it with your finger.



## Step 5 - Micro SD card

Remove the micro SD card.



## Step 6 - Intermediate housing

Remove the 14 Phillips screws, including the one that is hidden behind the "No broken" seal.







## Step 7

Separate the housing with the opening tool.



## Step 8 - Antenna coaxial cable

Disconnect the coaxial cable at both ends.



## Step 9

Once disconnected pull it to remove it.

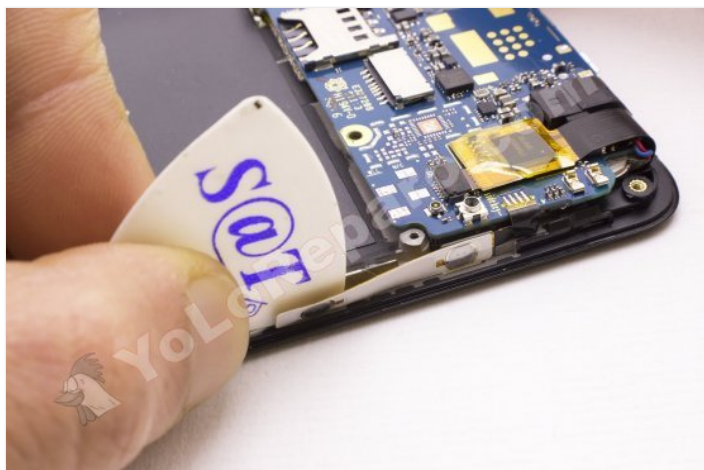




## Step 10 - Flex side buttons.

Peel off the flexes of the side buttons with the pick.

Be careful not to cut the flex cable with the barb.



## Step 11 - Motherboard

Disconnect the data cable from the screen by operating the connector tab and gently pulling the cable.



## Step 12

Remove the Phillips screw and separate the plate from the top.







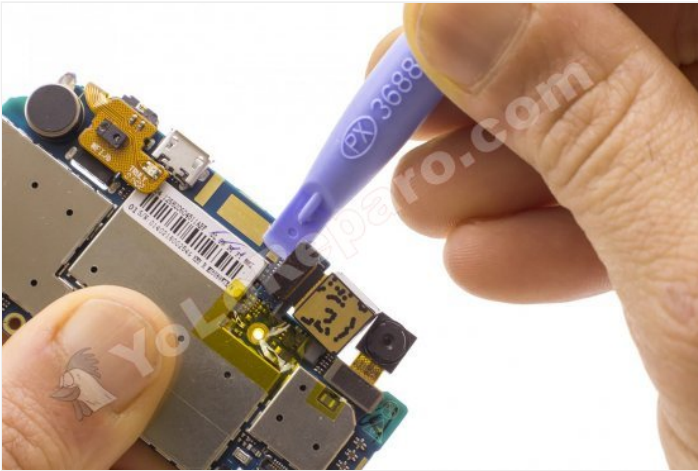
### Step 13

Disconnect the data flex that holds the plate by pulling on the tab of the connector and gently pulling the cable.



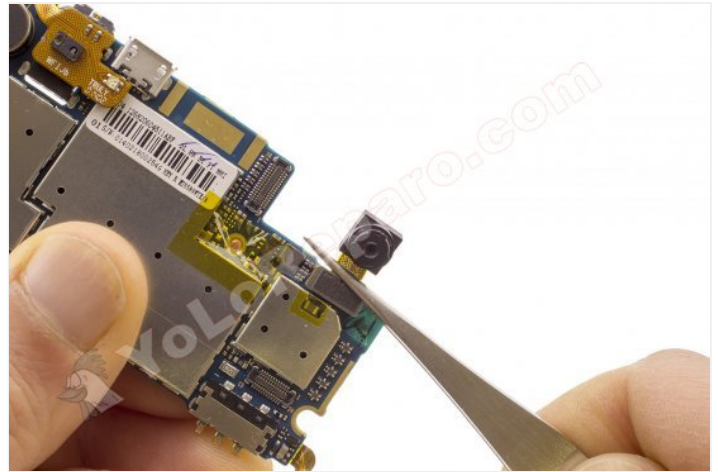
## Step 14 - Rear camera

Unplug and remove the camera by pulling it gently.



## Step 15 - Front camera

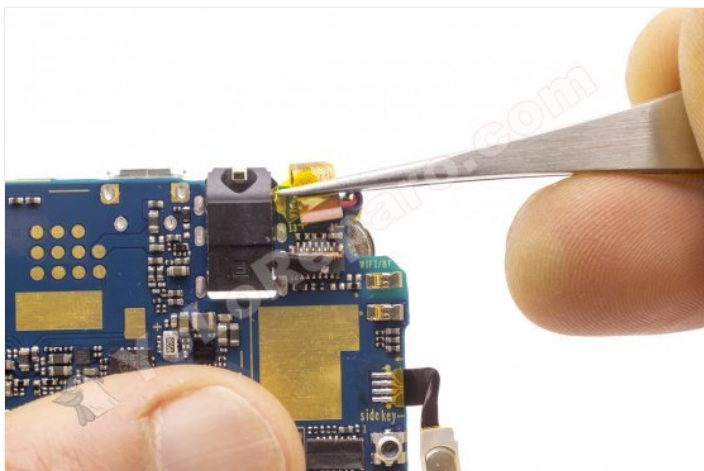
Unplug and remove the front camera by pulling it gently.





## Step 16 - Proximity sensor

Disconnect the flex cable, by pulling on the tab of the connector and gently pulling the cable.



## Step 17 - Motherboard

Take off and remove the flex with the proximity sensor.

