

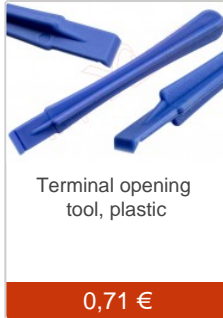


NadieMeLlamaGallina.com

Porque Yo Lo Reparo

Step by step tutorial: of Apple iPhone 4s Frontal camera.

For this tutorial you will need the following spared parts and tools that you cant get at our online store Impextrom.com
Click on a tool for visit the website.



Step 1 - Battery cover

To open the lid it is necessary to remove two "pentalobe" screws.

Use a suitable screwdriver.



Step 2

Press with your fingers forward to move the lid.



Step 3

Remove the battery cover.



Step 4 - Battery connector

The battery connector is supported by two Phillips screws.

Remove the part under the upper screw colored green and keep it. Due to its size it is very easy to lose it.



Step 5

Disconnect the battery with a plastic tool so as not to damage the board or the connector.



Step 6 - Remove battery.

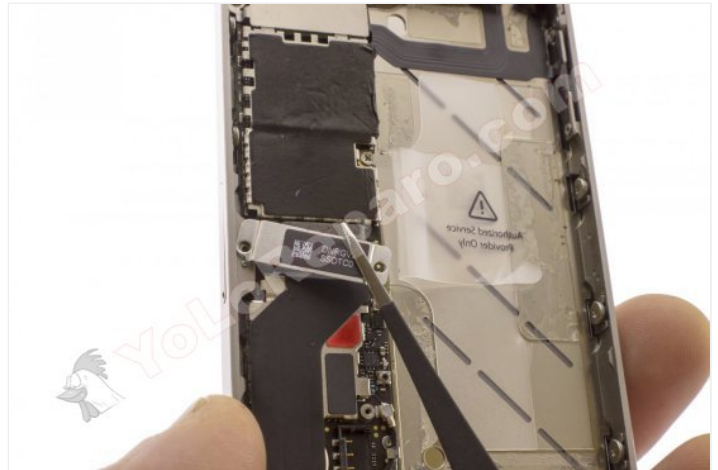
Pull the plastic strip to detach the battery.





Step 7

Remove the connector cover. It is secured with two 1.5 and 1.2 mm Phillips screws.



Step 8 - Bottom connector base plate

With the help of an opening tool disconnect and separate the flex cable.





Step 9 - Cable coaxial

Disconnect the coaxial cable from the motherboard.



Step 10

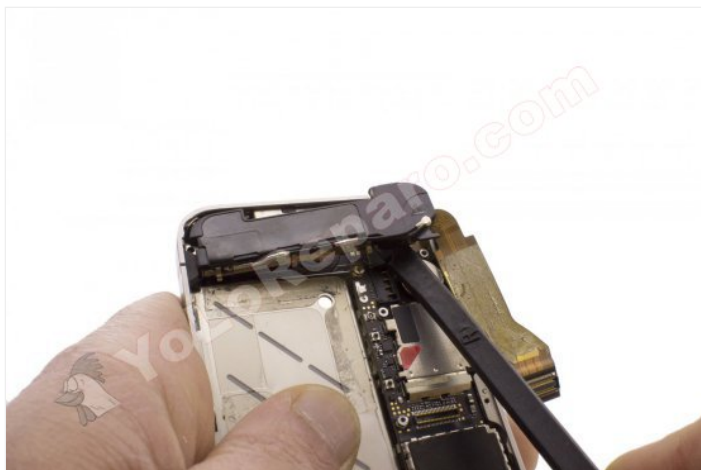
Remove the two 2.4mm Phillips screws.

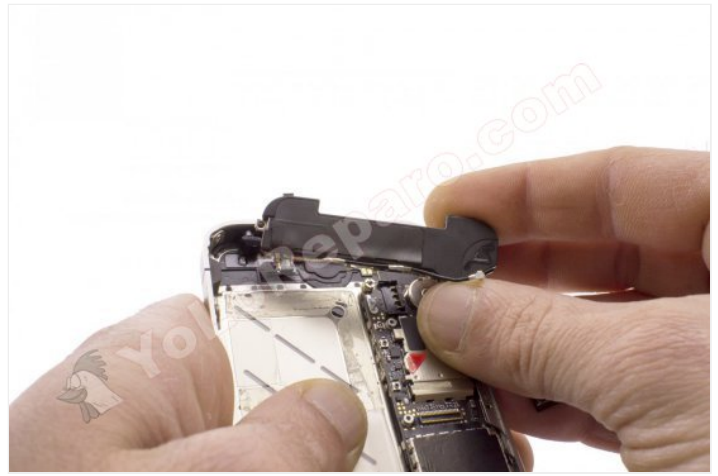
Do not lose the piece of plastic that will be loose after the screw on the left.



Step 11 - Bottom module

The lower module is attached to the chassis. You must pry gently with an opening tool to release it.





Step 12 - Motherboard connector cover

Remove the screws from the cover:

- 2.6mm
- 1.2mm
- 1.3mm
- 2.7mm



Step 13 - Baseboard connectors

Disconnect the connectors from the motherboard:

- Headphone Flex, jack and volume buttons
- Flex of the rear camera.
- Digitizer Flex (touch screen).
- Flex of the LCD display.



Step 14 - Rear camera

The camera is held by the connector to the motherboard.

Unplug it with an opening tool.





Step 15

Remove the clip that is attached with a 1.5mm Phillips screw.



Step 16

Use a flat screwdriver to remove the 4.8mm Standoff screw

Disconnect the flex cable from the WIFI antenna.



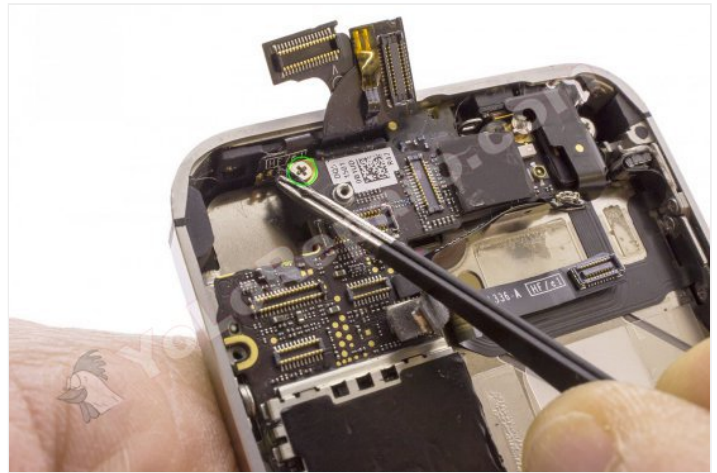
Step 17 - Base plate screws

Remove the screws that hold the motherboard:

- 2.6mm Phillips (remove the attached cover)
- 4.8mm Standoff (see previous step)
- 2.4mm Phillips

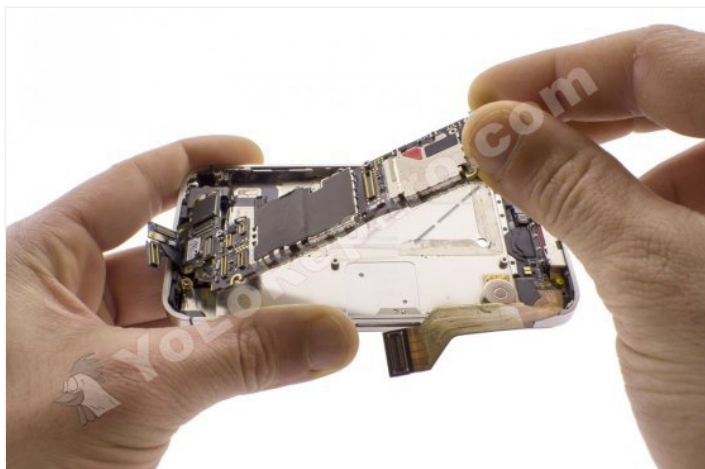
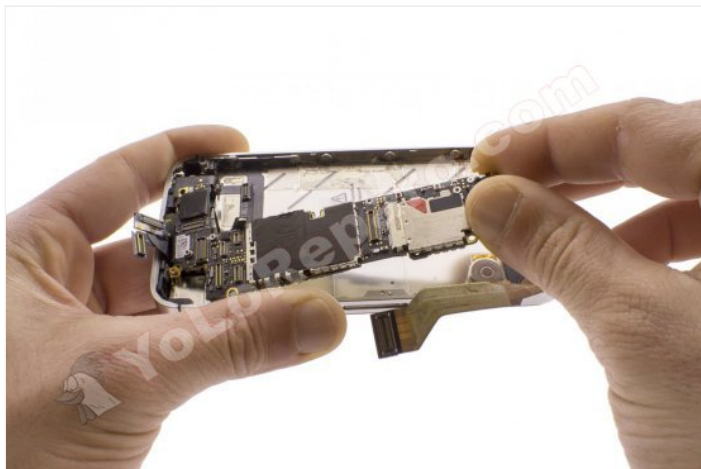
Parte inferior:

- 2.5mm Phillips
- 3.6mm Standoff



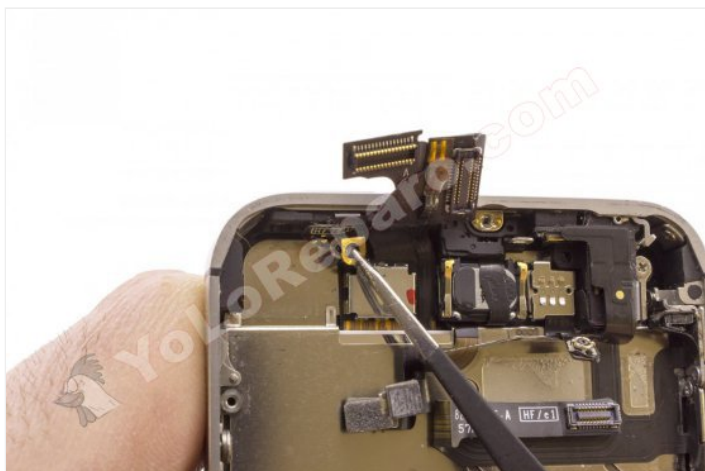
Step 18 - Motherboard

Holding it from the bottom, remove the motherboard carefully.



Step 19

Remove and make sure not to lose the component that acts as a mass of the camera.





Step 20 - Frontal camera

The camera is held by a metal support with three notches. To remove it, simply pry gently, we recommend a curved tip tool.

When reassembling it must fit the three notches of the small shield or support.



Step 21

Pull gently on the flex cable to remove the camera.

