



NadieMeLlamaGallina.com

Porque Yo Lo Reparo

## Step by step tutorial: of Samsung Galaxy Tab S2 Auxiliary board with USB connector and home button

For this tutorial you will need the following spared parts and tools that you cant get at our online store [Impextrom.com](http://Impextrom.com)  
Click on a tool for visit the website.



Assistant board  
PREMIUM with  
charging and  
accessories connector

9,34 €



Heat-opening thermal  
mat, CPB320

69,61 €



Professional  
disassembly spatula  
for mobile phones  
and smartphones

2,71 €



SIM card removal  
tool for all brands

1,61 €



Pinza antiestática  
ESD redondeada

3,06 €



2.2" suction cup for  
disassembling  
smartphones

4,66 €

### Step 1 - Samsung Galaxy Tab S2

#### Specifications

**Dimensions :** 237.3 x 169 x 5.6 mm

**Weight :** 392 g

**SoC :** Samsung Exynos 5 Ocia 5433

**Processor :** 4x 1.9 GHz ARM Cortex-A57, 4x 1.3 GHz ARM Cortex-A53, **Number of cores:** 8 **Graphics processor :** ARM Mali-T760 MP6, 700 MHz, **Number of cores :** 6

**RAM memory:** 3 GB, 825 MHz

**Internal memory:** 32 GB, 64 GB

**Memory cards:** microSD, microSDHC, microSDXC

**Display :** 9.7 in, Super AMOLED, 2048 x 1536 pixels, 24 bit

**Battery :** 5870 mAh, Li-Polymer (polymer lithium ion)

**Operating system:** Android 5.0.2 Lollipop

**Camera:** 3264 x 2448 pixels, 2560 x 1440 pixels, 30 fps

**Wi-Fi:** a, b, g, n, n 5GHz, ac, Dual band, Wi-Fi Direct

**USB:** 2.0, Micro USB

**Bluetooth:** 4.1

**Location / Navigation:** GPS, A-GPS, GLONASS

Before starting make sure the tablet is off.



## Step 2 - SIM and SD cards

Remove the SIM and SD cards.



### Step 3 - screen

To access the interior of the tablet, we must take off the screen. This is stuck to the chassis by a strip of double-sided adhesive that runs along the contour.

We will apply heat with a thermal mat to soften the adhesive located around the contour.

We introduce an opening tool like a barb or opening letter between the glass and the plastic frame and we go around the contour, taking off the adhesive.





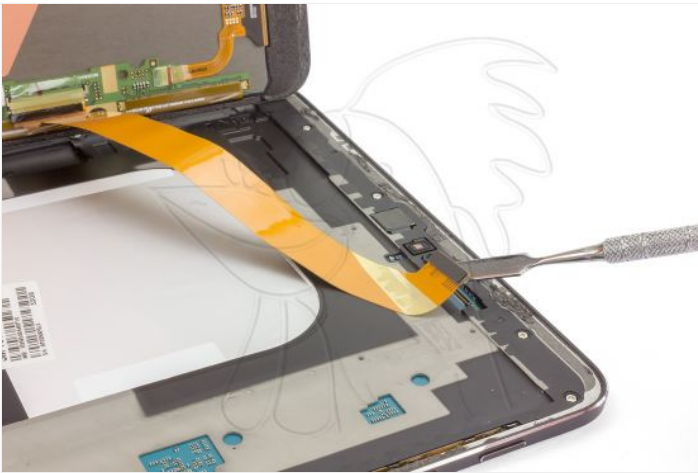
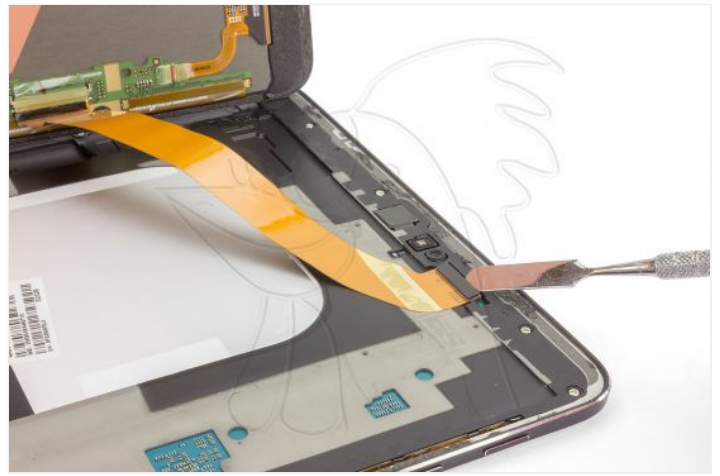
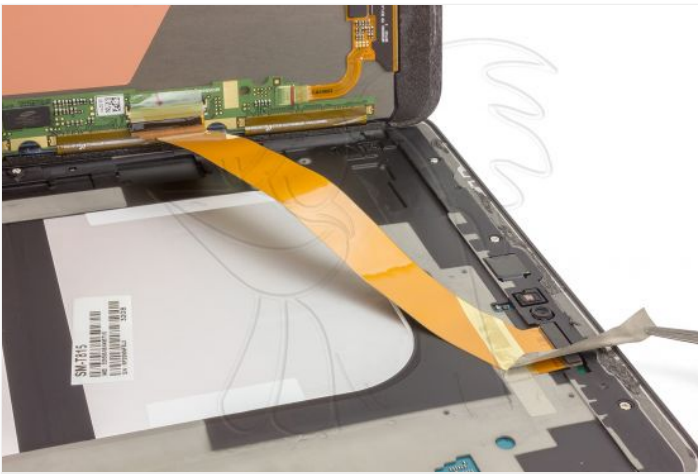
#### Step 4

The screen carries a flex data cable that connects it to the motherboard. We must be careful to separate it from not damaging said flex.

Remove the adhesive that holds the flex and unplug the connector from the motherboard to separate the screen.







## Step 5

Wipe away the adhesive residue from the contour before gluing the screen again.



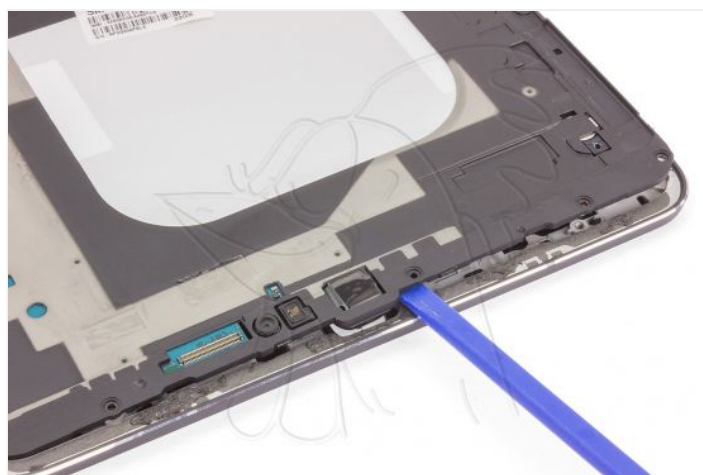
## Step 6 - Screws

Remove the 19 Phillips screws.



## Step 7

Now we can separate the back covers of the chassis with the components. Use an opening tool to gently pry and unhook it.

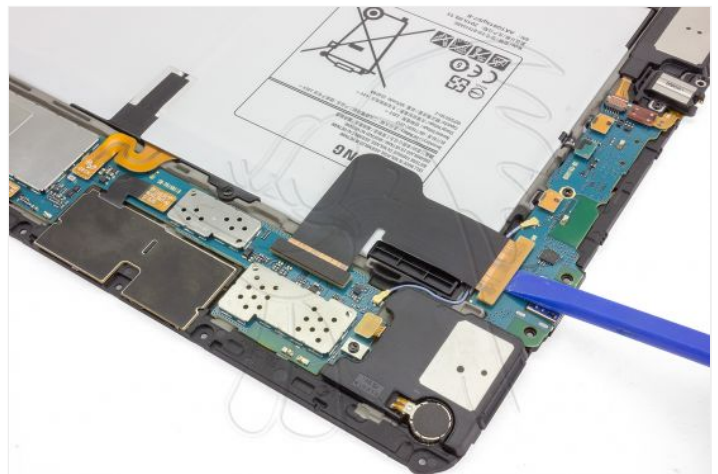
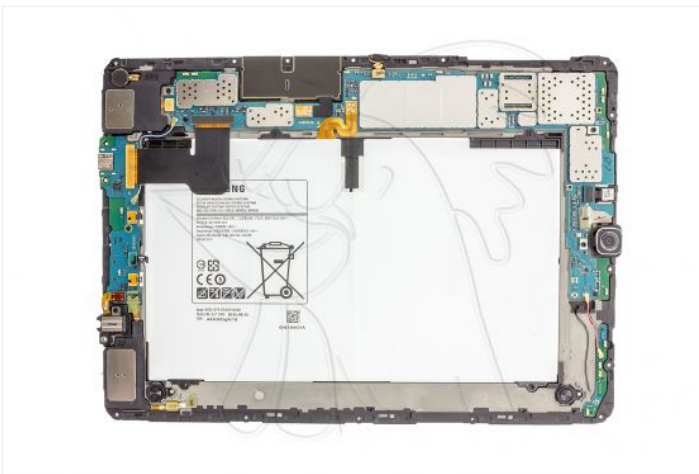


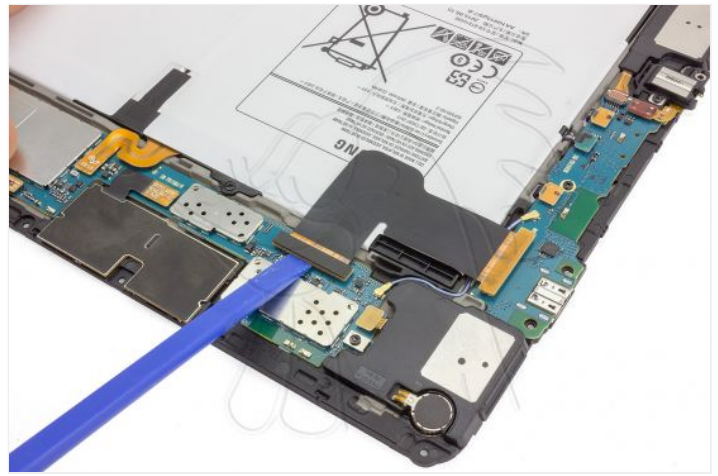
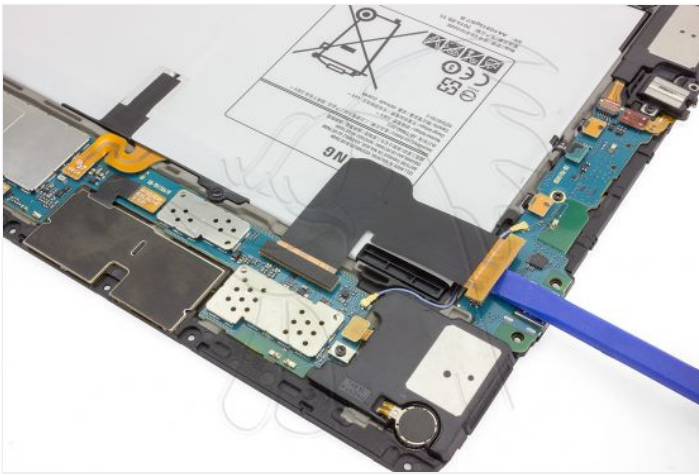




## Step 8 - Interconnection Flex

Disconnect the flex that connects the motherboard and the auxiliary.



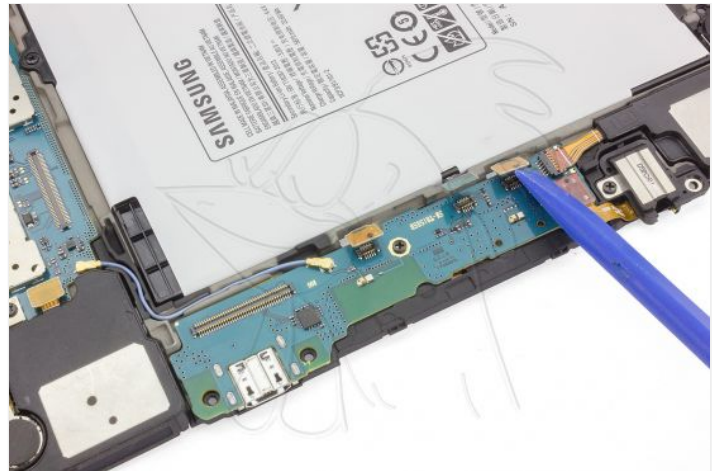
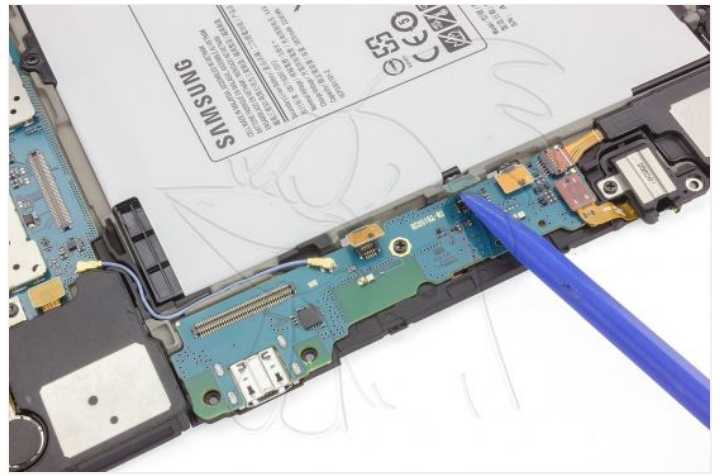


## Step 9 - Auxiliary plate

Unplug the flexes from the front touch buttons and the home key.





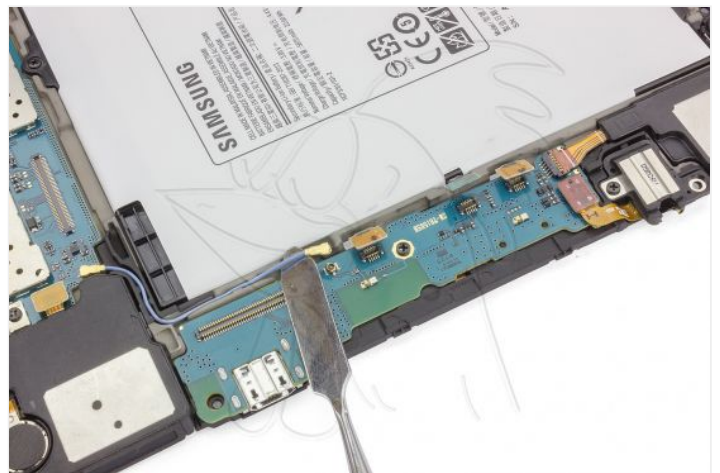
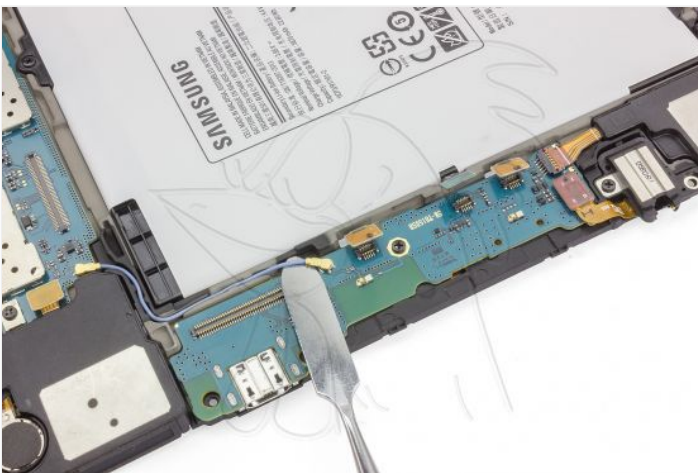


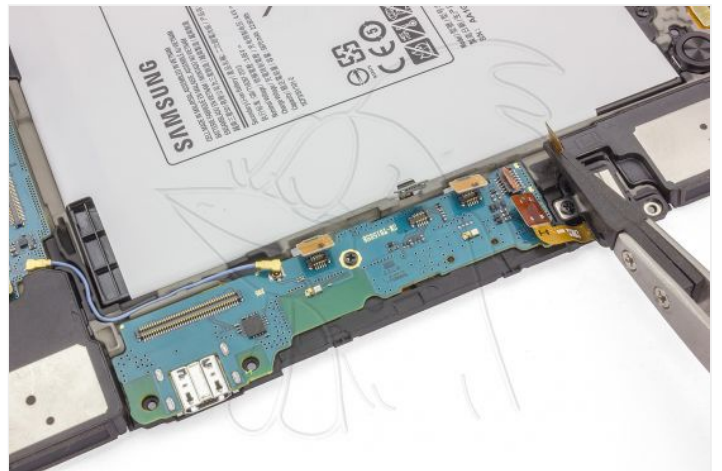
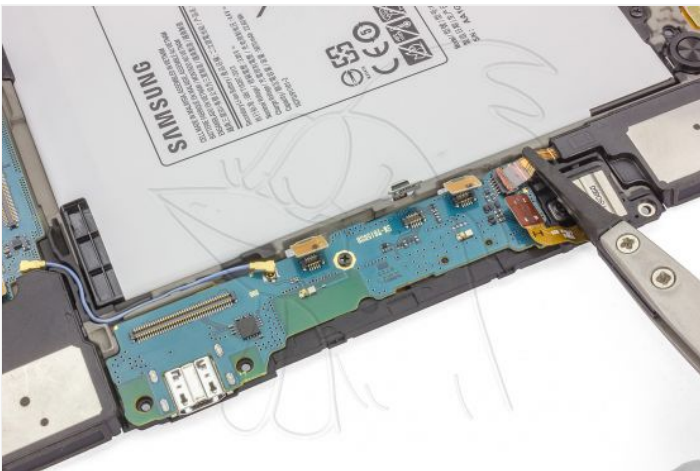
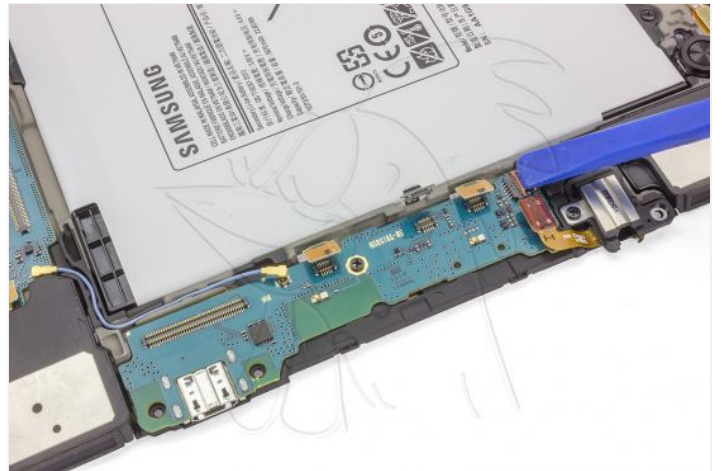
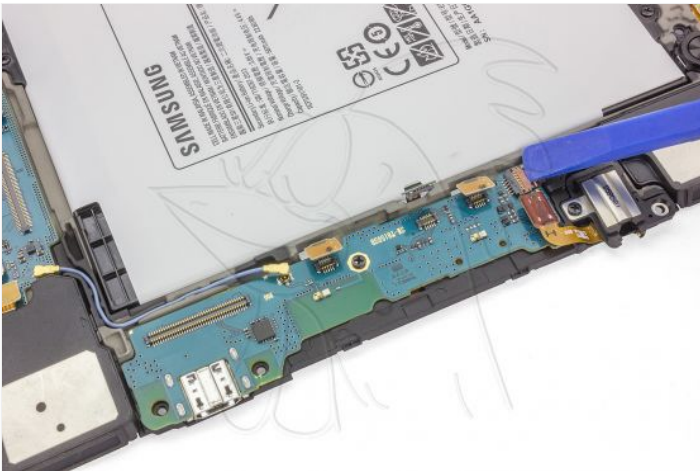
## Step 10

Disconnect the coaxial cable.

Disconnect the flex from the audio connector.

Unplug the flex from the left speaker, by pulling on the tab of the connector and pulling gently.







Finally, take off the auxiliary plate by pushing from below with a spatula.

