

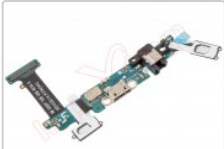


NadieMeLlamaGallina.com

Porque Yo Lo Reparo

Step by step tutorial: of Samsung Galaxy S6 Bottom plate

For this tutorial you will need the following spared parts and tools that you cant get at our online store Impextrom.com
Click on a tool for visit the website.



Flex with charging connector, micro USB data and Accessories for

3,68 €



Professional Double Plastic Device Opening Tool

1,52 €



Professional disassembly spatula for mobile phones and smartphones

2,71 €



Hot air soldering station - KADA 852

43,12 €



ESD spatula tool for opening smartphones

1,59 €



Opening tool Smartphone, tablet

2,19 €



Special SAT 0.75mm high friction PVC pick

1,07 €



2.2" suction cup for disassembling smartphones

4,66 €



Smartphones and PC repair tool case

35,92 €

Step 1 - Samsung Galaxy S6

Characteristics:

Dimensions: 143.4 x 70.5 x 6.8 mm.

Weight: 138 g.

Display: Super AMOLED 1440 x 2560 pixels, 5.1 inches.

Memory: 32GB / 64GB / 128GB internal memory, 3GB RAM.

Processor: Exynos 7420 octa-core 64 bits, Mali-T760 GPU.

Front camera : 5 MP video-1080p.

Rear camera: 16 MP, 3456 x 4608 pixels, video 2160p @ 30fps.

Battery: Standard, Li-Ion 2550 mAh.

Operating system: Android OS, v5.0 Lollipop.





Step 2 - Back cover

We will start by removing the back cover that is attached to the intermediate housing. For this we will apply some heat to soften the glue.

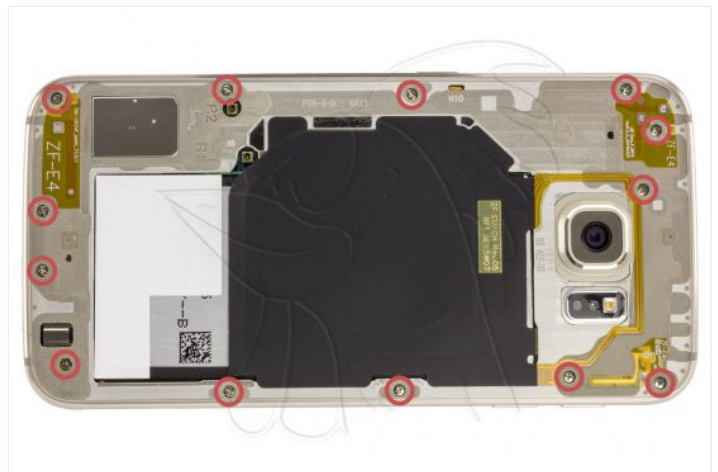
Using a suction cup we can separate the lid a little to introduce the tool more easily. Sliding the spike around the contour we will take off the lid.





Step 3 - Screws and SIM tray

To remove the intermediate housing we will have to remove the thirteen Phillips screws (PH # 0) and the tray of the SIM card.





Step 4 - Intermediate housing

After removing the screws and the tray, removing the casing will be simple. Using an opening tool, we will release the hooks that attach it to the chassis.





Step 5 - Disconnect components

To remove the motherboard first we will have to disconnect all the components connected to it. We will disconnect the headset with microphone and sensor, the battery, the camera and the flex of the screen. In the lower part we disconnect the coaxial cables and the flex of the home button.





Step 6 - Removing the motherboard

To remove the base plate, first disconnect it from the bottom plate by lifting it as shown in the first two images. Now it only remains to discard it with care.





Step 7 - Heat screen

Since we are going to heat the screen, it is always safer to remove the battery. If we do it very carefully, it should not be necessary.

The screen is attached to the chassis by a thin strip of double-sided adhesive, located all around the contour. We will heat the glass to soften the adhesive and peel off easily.

We suggest 2 methods:

1. **Hot Glass (Recommended):** Heat blanket for microwave (See instructions).
2. **Hot air nozzle:** Included in the SMD soldering stations.





Step 8 - Take off screen

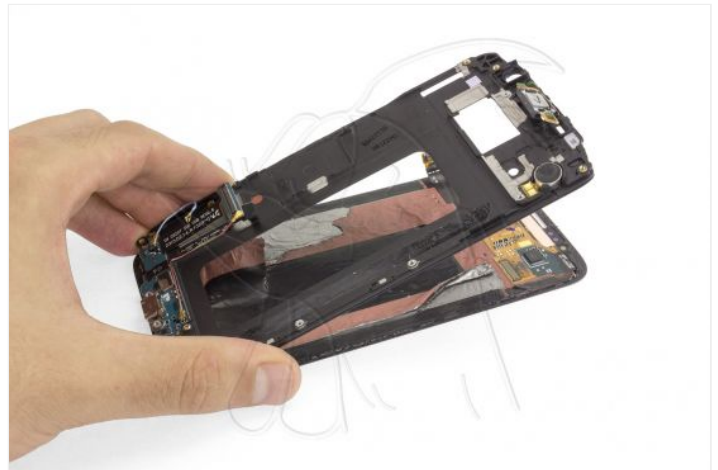
With the hot screen, we will introduce a plectrum between it and the chassis to unstick it. We will slide the barb around the contour of the phone avoiding the areas where the flex cables are located.





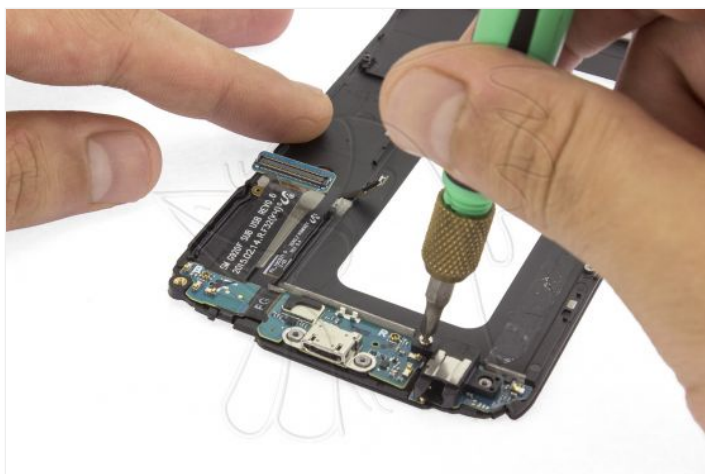
Step 9

The screen is very glued so we will look for any input through which we can introduce the pick to remove as much glue as possible.



Step 10 - Take off lower plate

To remove the bottom plate, first remove the Phillips screw (PH # 0) that holds it to the chassis and then we will take off on the inside to avoid damaging the flexes of the front buttons.



Step 11 - Bottom plate

Now all that's left is the front buttons. We will take them off very carefully as they are quite fragile.



