



**NadieMeLlamaGallina.com**

Porque Yo Lo Reparo

## Step by step tutorial: of Wiko Harry 2 Frontal camera

For this tutorial you will need the following spared parts and tools that you cant get at our online store [Impextrom.com](http://Impextrom.com)  
Click on a tool for visit the website.



BK-7275 (A Version)  
5 in 1 screwdriver

6,41 €



Opening tool  
Smartphone, tablet

2,19 €



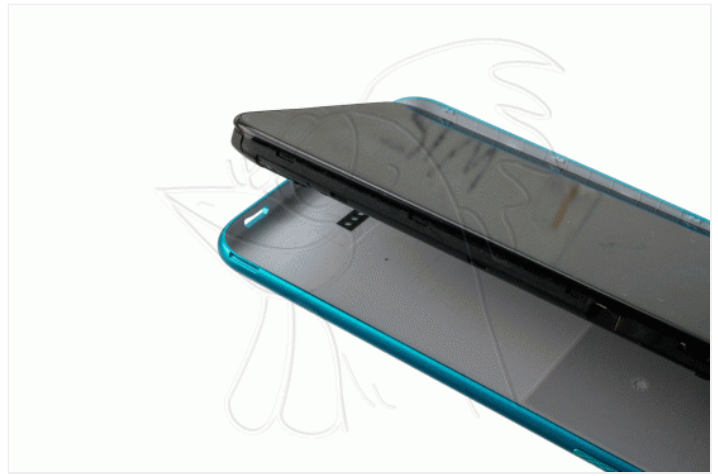
PINZAS PUNTAS  
CURVAS  
PROFESIONAL

4,98 €

### Step 1 - Opening

Look for the opening notch on the side of the bottom part on the back cover. Press with your finger to detach the case and remove it.





## Step 2 - Remove upper intermediate housing

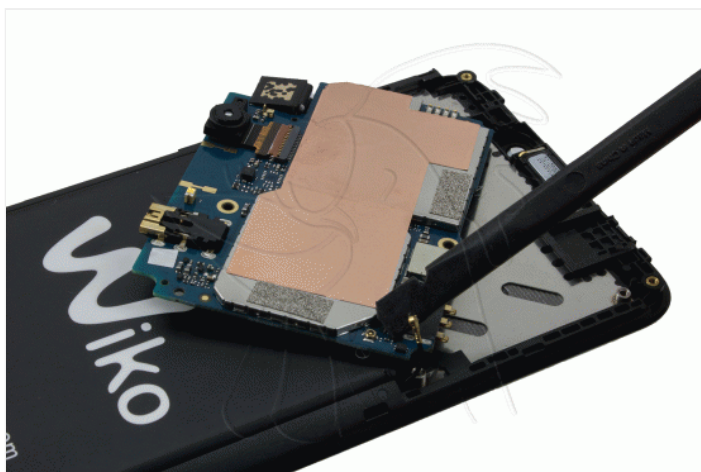
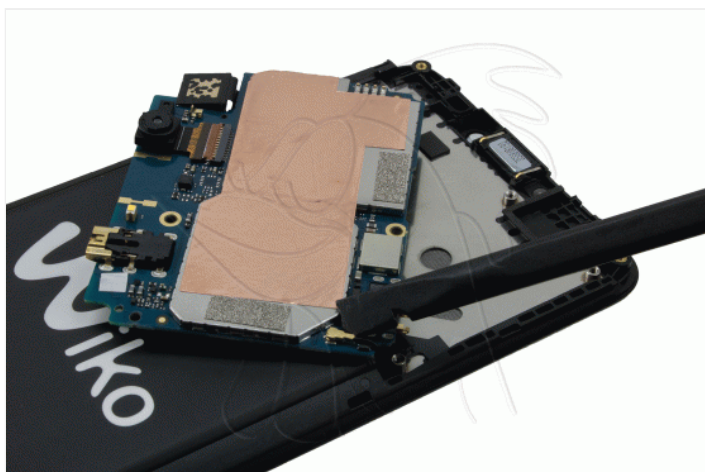
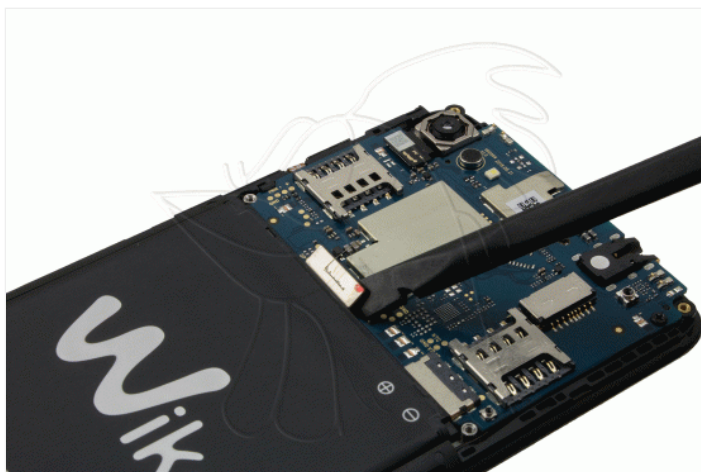
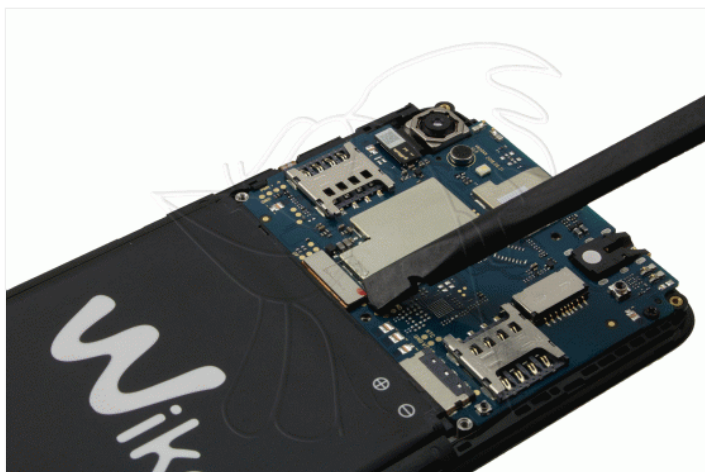
Loosen the 6 Phillips screws (PH # 00) that hold the intermediate housing and remove it with the opening tool.





### Step 3 - Remove motherboard

With the opening tool release the connection of the base plate. Remove the Phillips screw (PH # 00) that holds the plate and lift it with the opening tool. Release the coaxial cable and remove the plate.



## Step 4 - Remove front camera

With the opening tool release the connection of the camera and remove it.

