



**NadieMeLlamaGallina.com**

Porque Yo Lo Reparo

## Step by step tutorial: of Sony Xperia Z1 Audio connector and proximity sensor

For this tutorial you will need the following spared parts and tools that you cant get at our online store [Impextrom.com](http://Impextrom.com)  
Click on a tool for visit the website.



Screwdriver 15 in 1,  
Mobiles and Tablets  
BK-315

5,48 €



Opening tool  
Smartphone, tablet

2,19 €



ESD-12 precision  
antistatic tweezers  
with fine tip

2,17 €



Stripper gun, hot air  
welder for repairs

15,59 €



Special SAT 0.75mm  
high friction PVC pick

1,07 €



2.2" suction cup for  
disassembling  
smartphones

4,66 €



Electrical dissipating  
clamps, in blister

3,97 €

### Step 1 - Back cover

The back cover, like the screen, is glued and sealed to ensure the tightness of the phone.

To open it it is necessary to heat the lid to soften the glue and thus remove it easily.

We suggest 2 methods that will be explained below:

1. The hot air gun.
2. HOT GLASS.



## Step 2 - Hot air gun

Simply heat the back cover with the air jet for a few seconds.

Excessive heat from the gun can damage the equipment. Use it with caution at the minimum power and in short radiants.



### Step 3 - HOT GLASS

Insert the HOT GLASS in the microwave for the time specified in the instructions.

To heat it evenly, it is necessary to interrupt the microwave every 30 seconds to distribute heat throughout the HOT GLASS with your hands.

Apply heat with the HOT GLASS directly to the back cover.



## Step 4

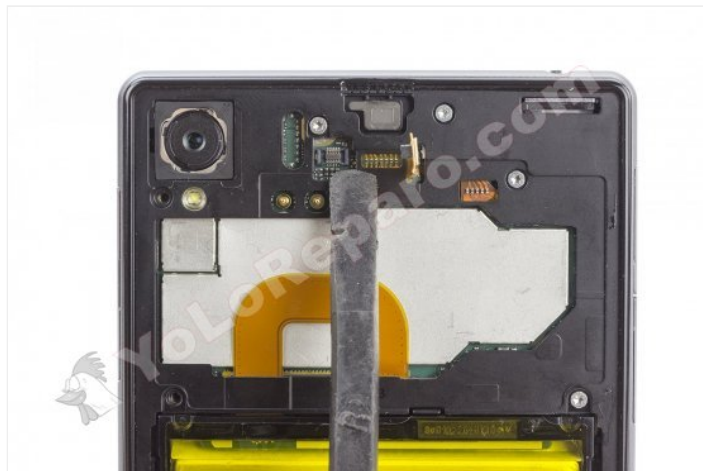
Insert the tip of the pick into the small slot on the top.

Move the spike all the way around while holding the cover with the suction cup.



## Step 5 - Flash and microphone flex

Unplug the flex from the flash and microphone.



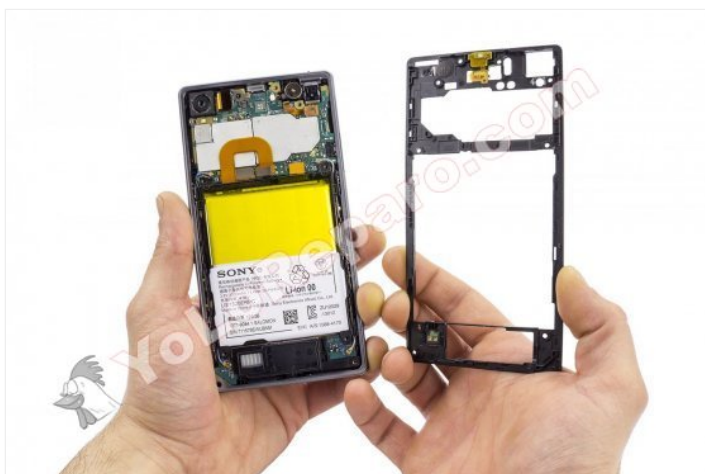
## Step 6 - Intermediate housing

Remove the 9 Torx screws that hold the intermediate housing.



## Step 7

Apply heat back to the intermediate housing and traverse the contour with the spike as you did with the back cover.



## Step 8 - Battery

Disconnect the flex from the battery of the motherboard.



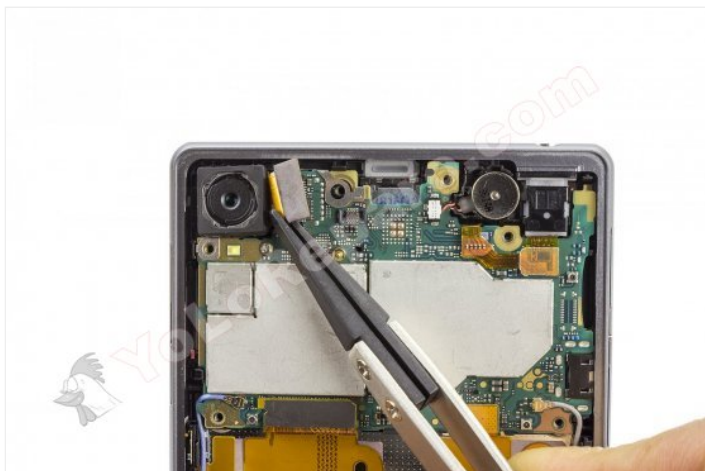
## Step 9

Peel off the battery, prying with the opening tool.



## Step 10 - Rear camera

Unplug and remove the rear camera.



## Step 11 - Vibrator

Disconnect the vibrator from the base plate and remove it from the housing with the help of the clamps.





## Step 12 - Antenna coaxial cables

Disconnect the upper ends of the coaxial cables.



## Step 13 - Baseboard connectors

Disconnect the flex cables that hold the motherboard.



## Step 14

Remove the metal piece of dough that surrounds the hollow of the main chamber.

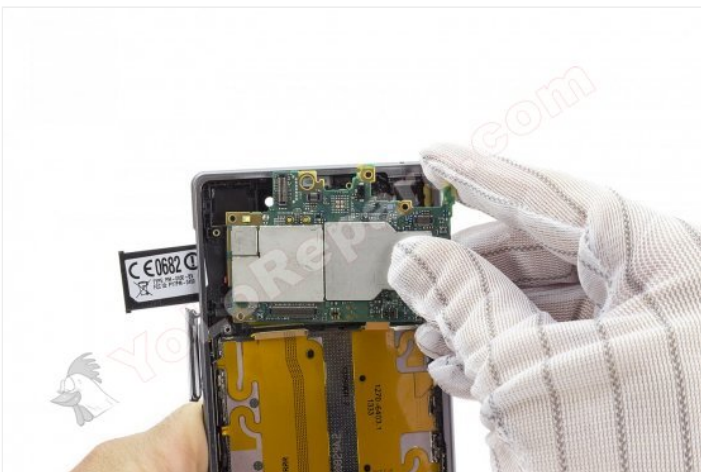
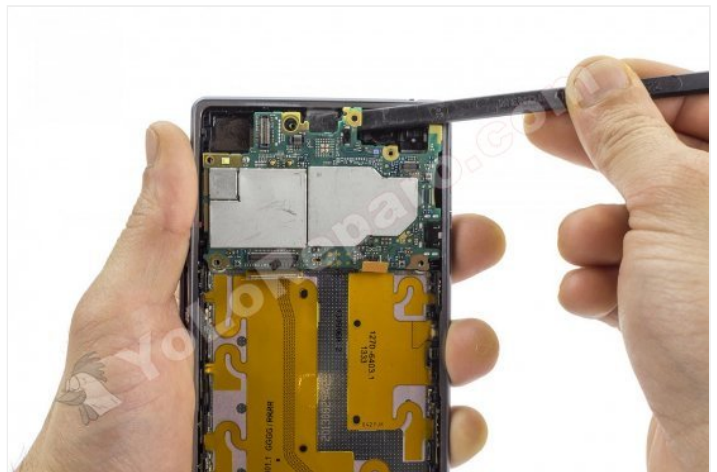
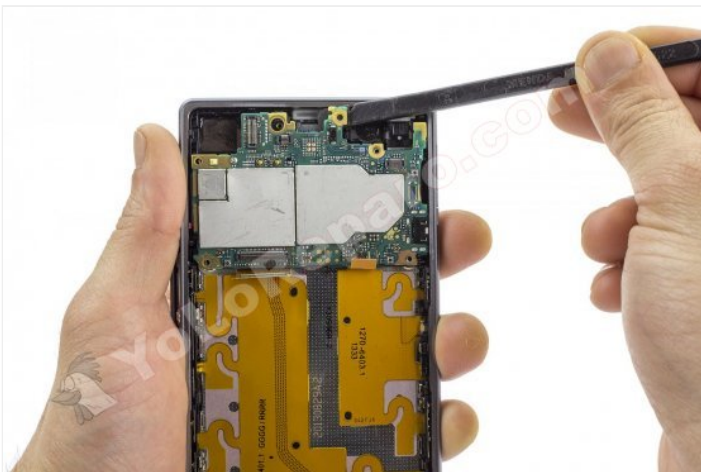




## Step 15 - Motherboard

Separate the base plate.

To prevent damage to the equipment, we recommend the use of antistatic gloves whenever you handle SMD circuits with your hands.



## Step 16

Peel off the proximity sensor with the opening tool.

Peel off the audio connector. This is glued to ensure tightness, apply heat so that it becomes easier to peel off.

