



**NadieMeLlamaGallina.com**

Porque Yo Lo Reparo

## Step by step tutorial: of Elephone S7 Side keys

For this tutorial you will need the following spared parts and tools that you cant get at our online store [Impextrom.com](http://Impextrom.com)  
Click on a tool for visit the website.



Head made of synthetic carbon steel with titanium handle

18,63 €



Heat-opening thermal mat, CPB320

69,61 €



BK-7275 (A Version) 5 in 1 screwdriver

6,41 €



Opening tool Smartphone, tablet

2,19 €



Pinza antiestática ESD redondeada

3,06 €



Flexible plastic card for easy opening

0,98 €



Set of professional tools for opening smartphones and tablets

18,97 €



Special SAT 0.70mm PET pick, high friction and resistance

1,25 €

### Step 1 - Take off screen

We will start by heating the screen at about 60 ° C for about a minute to soften the adhesive.

With the hot screen, we will introduce an opening tool between it and the frame to detach it.





## Step 2 - Separate screen

Before separating the screen we will have to take off the flex of the home button and so we can move it to have access to the screws that hold the flex of it.

After removing the shield, we can disconnect it.

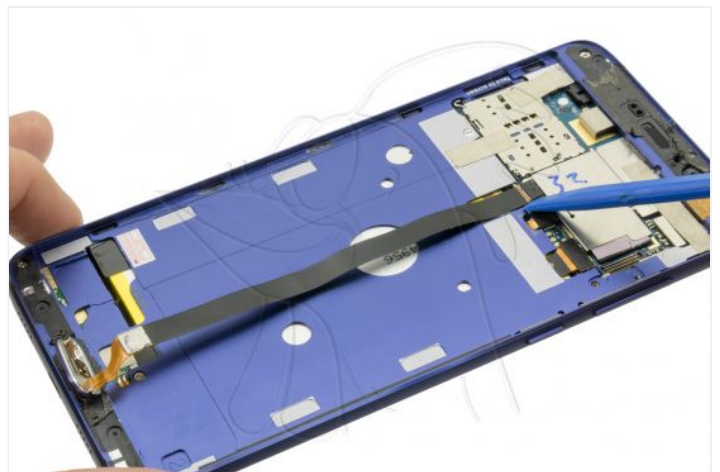


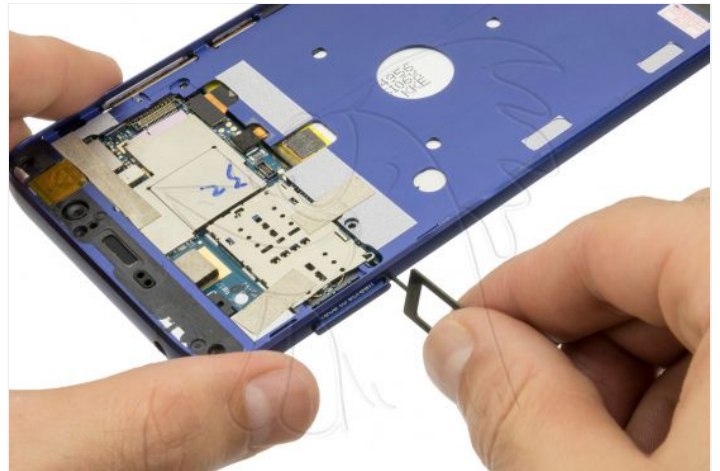
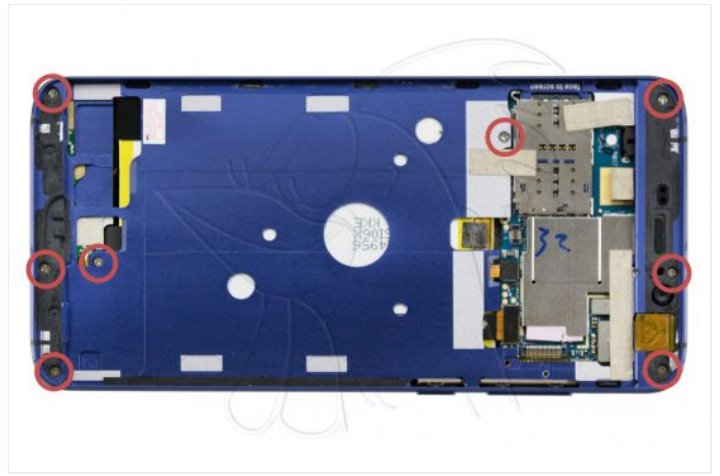




### Step 3 - Remove chassis

To remove the chassis, first remove the flex from the home button. We will also remove the screws, the SIM / SD tray and the adhesives.





## Step 4 - Remove back cover

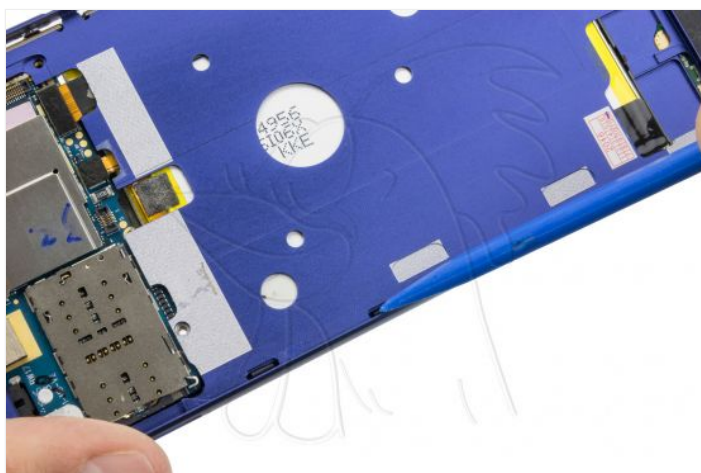
In this step we will heat the back cover of the phone to soften the adhesive and thus remove it more easily.





## Step 5 - Intermediate housing

Now, to remove the back shell, first let go of the top and bottom. Then we will have to release all the lateral notches as shown in the fourth and fifth images.



## Step 6 - Removing the motherboard

To remove the base plate, first cut the thermal adhesive that covers this and the battery. Remove the screw that holds the chassis, disconnect the components and desenchajamos.







## Step 7 - Side keys

Now we can undo the chassis keys.



