



Step by step tutorial: of Meizu M2 note screen

For this tutorial you will need the following spared parts and tools that you cant get at our online store Impextrom.com
Click on a tool for visit the website.



Professional Double
Plastic Device
Opening Tool

1,52 €



Heat-opening thermal
mat, CPB320

69,61 €



10pcs Anti-static
Rubber ESD Finger
Cots

2,68 €



SIM card removal
tool for all brands

1,61 €



Opening tool
Smartphone, tablet

2,19 €



Anti-static tweezer
tips VETUS ESD-249

4,74 €



Special SAT 0.70mm
PET pick, high friction
and resistance

1,25 €



Black IPS LCD full
screen for Meizu M2
Note 5.5 inches

4,49 €

Step 1 - Meizu m2 note

Specifications

Dimensions : 75.2 x 150.9 x 8.7 mm

Weight : 149 g

SoC : MediaTek MT6753

Processor : ARM Cortex-453, 1300 MHz, **Number of cores**: 8

Graphics processor : ARM Mali-T720 MP3, 450 MHz, **Number of cores**: 3 RAM: 2 GB, 800 MHz

Internal memory: 16 GB, 32 GB

Memory cards : microSD, microSDHC, microSDXC

Display: 5.5 in, IGZO, 1080 x 1920 pixels, 24 bit

Battery: 3100 mAh, Li-ion (lithium ion)

Operating system: FlyMe 4.5 (Android 5.0 Lollipop)

Camera: 4160 x 3120 pixels, 1920 x 1080 pixels, 30 fps

SIM card: Nano-SIM, Nano-SIM / microSD

Wi-Fi: a, b, g, n, n 5GHz, Dual band, Wi-Fi Hotspot, Wi-Fi Direct

USB: 2.0, Micro USB

Bluetooth : 4.0

Location / Navigation: GPS, A-GPS, GLONASS

Before starting, make sure that the mobile is turned off.



Step 2 - SIM and SD cards

Remove the tray with SIM and SD cards.





Step 3 - Screws

Remove the Pentalobe screws located on both sides of the charging connector.



Step 4 - Back case

Remove the back cover, using a plastic opening tool.





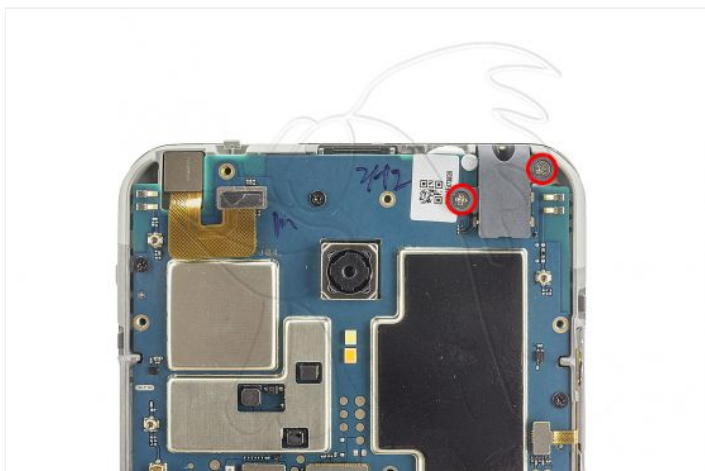
Step 5 - Intermediate housing

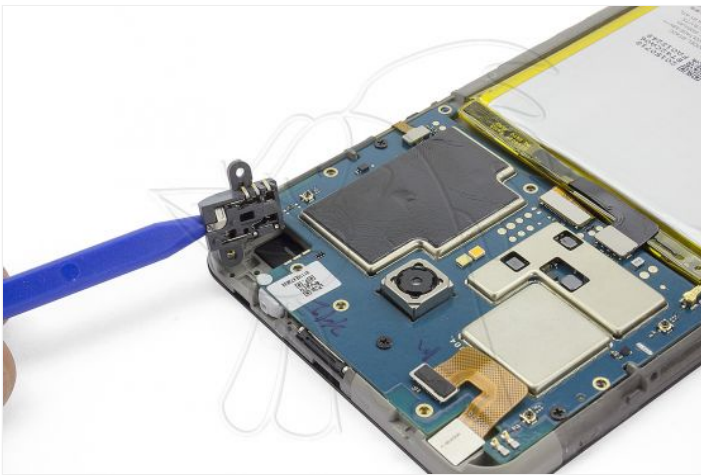
Remove the middle housing, secured by 8 Phillips screws.



Step 6 - Audio connector

Remove the 2 Phillips screws and pull the audio connector upwards to remove it.

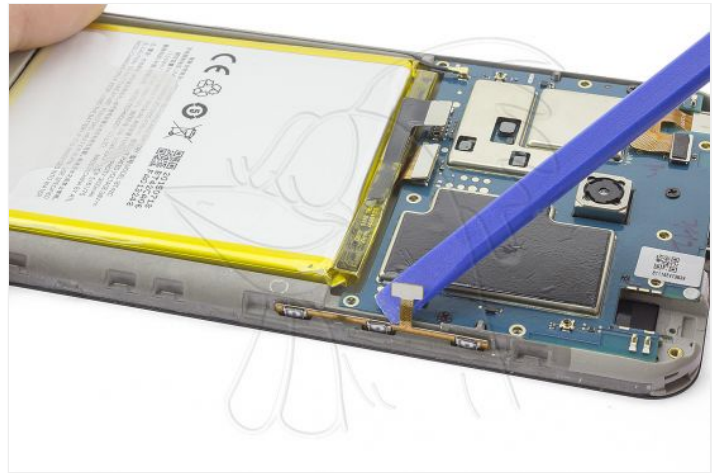
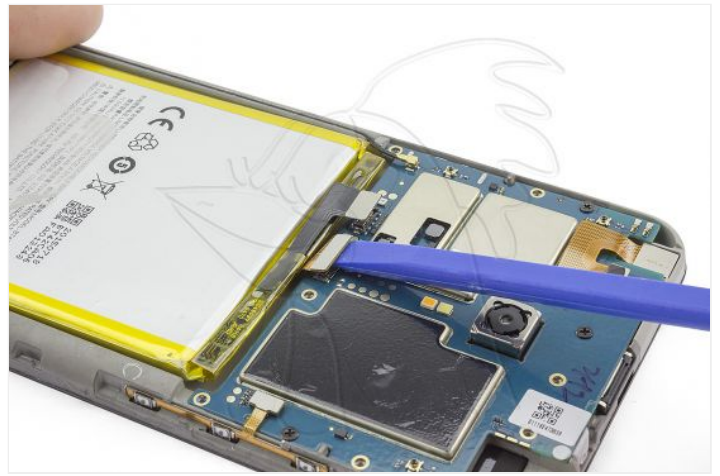
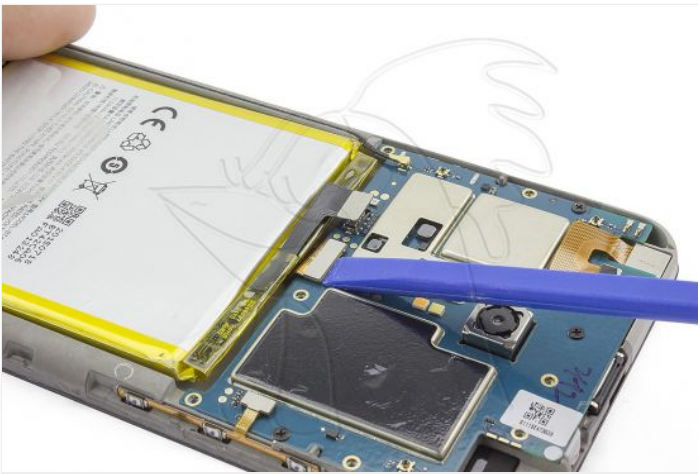




Step 7 - Motherboard connections

Disconnect the interconnection flex, the flex from the battery and the flex from the volume and ignition pushbuttons.



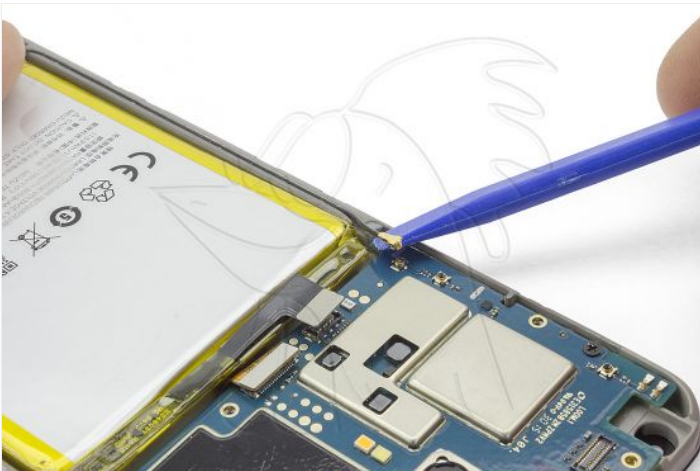
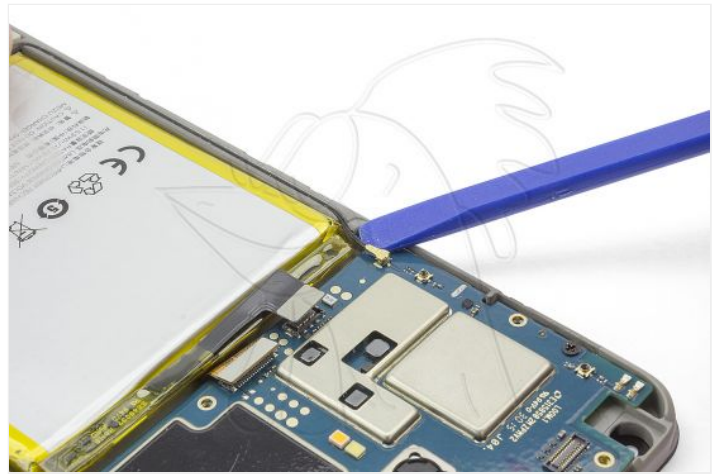


Step 8

Unplug and remove the front camera.

Disconnect the upper end of the coaxial cable.



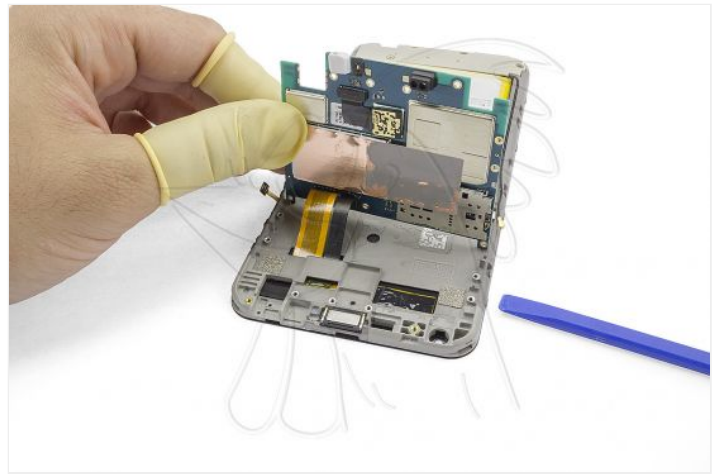


Step 9 - Motherboard

Remove the 3 Phillips screws that hold the motherboard.

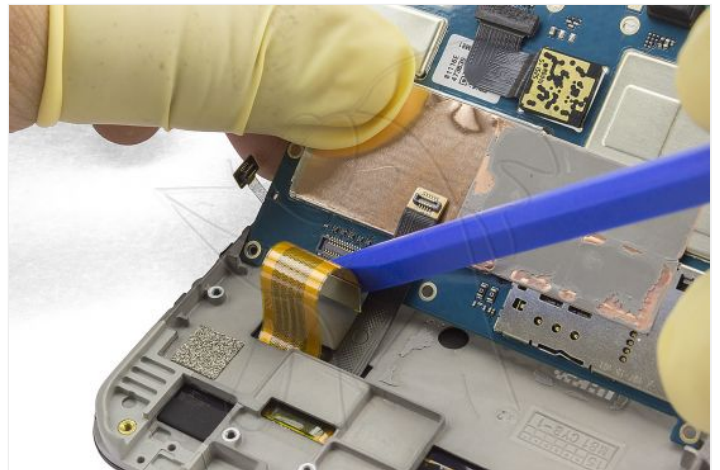
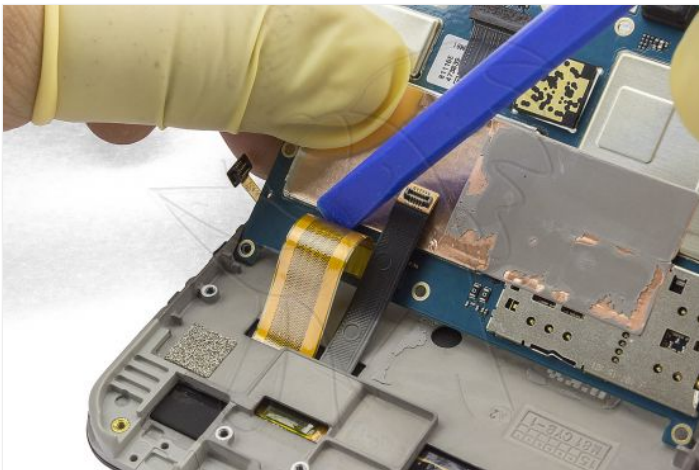
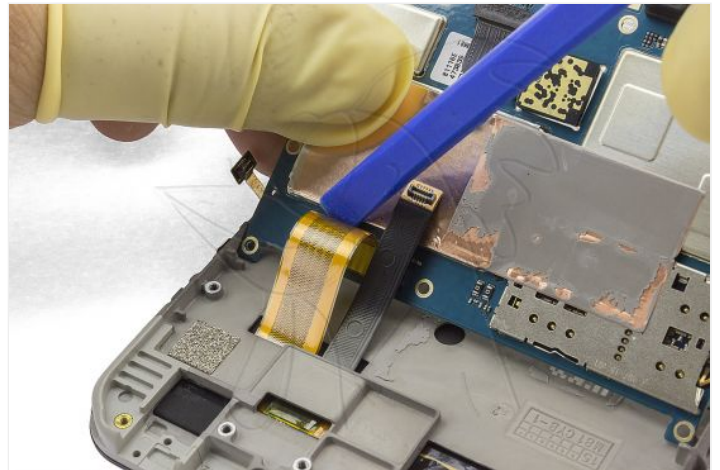
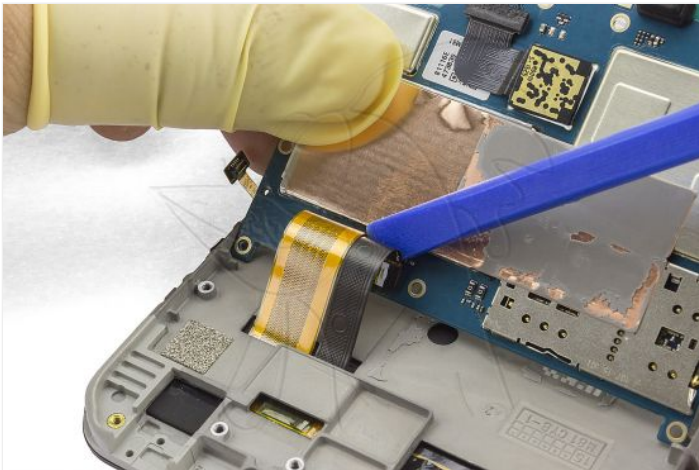
Separate the base plate, starting from the top, enough to access the flexes of the screen.





Step 10

Disconnect the data flexes from the screen.





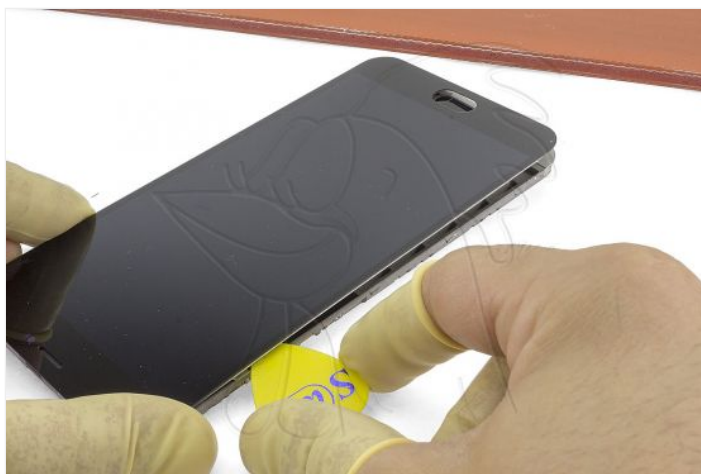
Step 11 - screen

The screen is attached to the chassis by a strip of adhesive that runs all the way around. To detach it we will apply heat to soften the adhesive and to peel off easily.

In this guide we use a thermal mat, which we will adjust between 80 and 100 °C. Warm the surface of the screen at this temperature for about 40 seconds.

Insert the prong between the glass and the plastic frame, making sure that it penetrates behind the LCD in addition to the glass. Scroll the contour, taking off the adhesive.





Step 12

Finally, separate the screen by passing the data flexes through their respective slots.



