



NadieMeLlamaGallina.com

Porque Yo Lo Reparo

Step by step tutorial: of Wiko Darkmoon GPS antenna

For this tutorial you will need the following spared parts and tools that you cant get at our online store Impextrom.com
Click on a tool for visit the website.



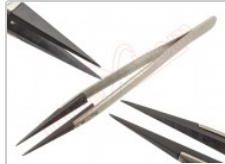
Professional disassembly spatula for mobile phones and smartphones

2,71 €



Opening tool Smartphone, tablet

2,19 €



Electrical dissipating clamps, in blister

3,97 €

Step 1 - Wiko Darkmoon

Specifications

SoC: MT6582, Cortex-A7 4x1.3 GHz CPU + Mali-400MP2 GPU.

Display: Resolution: 4.7 "capacitive IPS / 720x1280 pixels.

RAM / HDD memory: 1 GB / 4 GB internal expandable with microSD.

Operating System : Android 4.2.2 Jelly Bean.

Battery : 1800 mAh.

Dimensions / Weight: 137.5x68x7.9 mm / 110 grams.

Network: HSDPA + (21.0 Mbps) and HSUPA (5.76 Mbps).

Other specifications: Wifi b / g / n, Bluetooth 4.0, microUSB OTG, A-GPS, FM radio, 8.0 Mpx rear camera with dual-LED flash and 5.0 Mpx front, Dual-SIM.

Before starting make sure that the mobile is off.



Step 2 - SIM card

Remove the SIM tray.



Step 3 - housing

Separate the upper and lower trim pieces by pushing them with your fingers.





Step 4

Remove the 2 Phillips screws that hold the metal housing, as well as the 2 that hold the lower speaker module.



Step 5

Remove the metal casing, unhooking it from the sides.



Step 6 - Intermediate housing

Remove the intermediate housing, held by 5 Phillips screws.

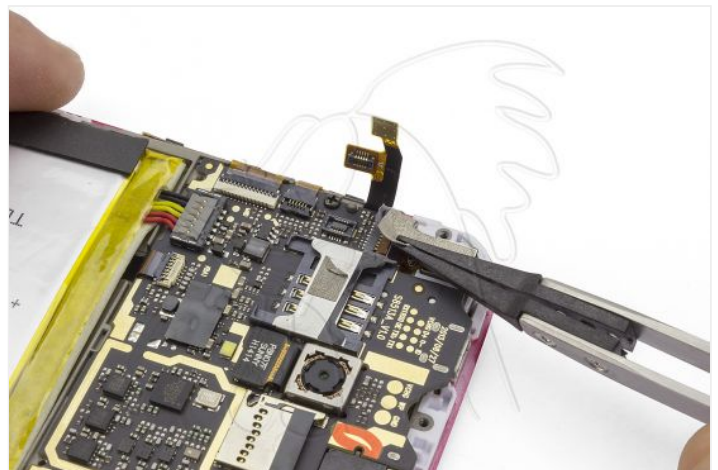
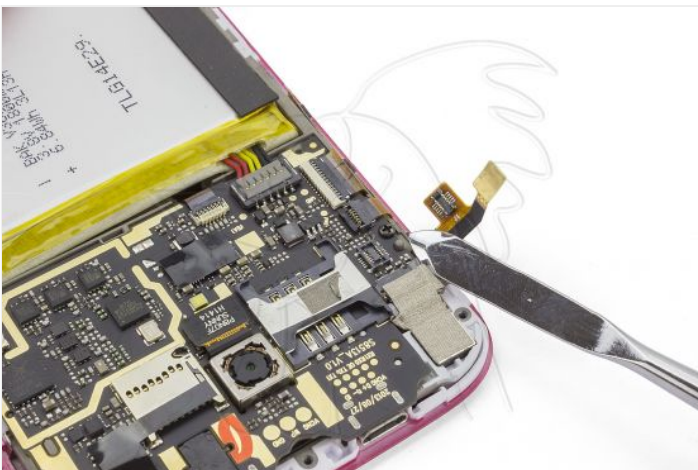


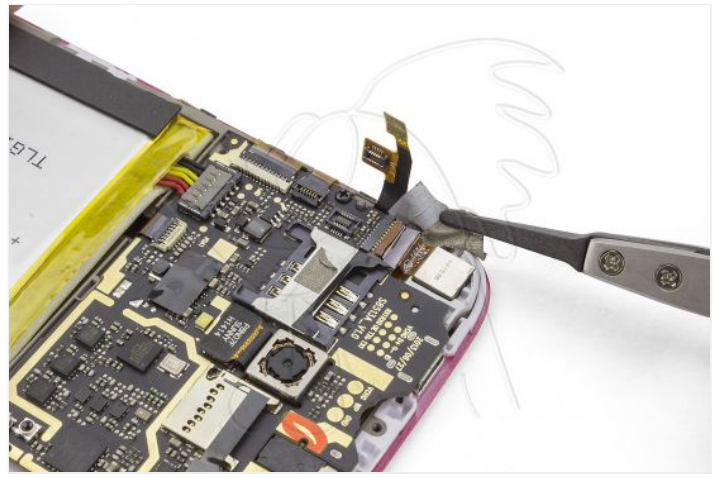
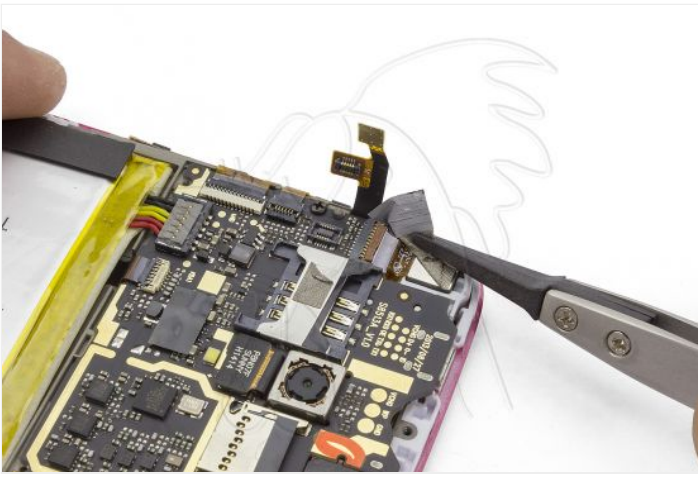


Step 7

Disconnect and detach the data flex from the easy screen.

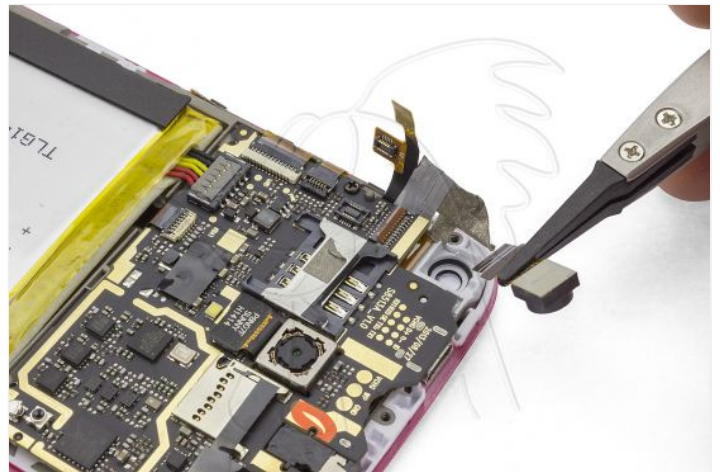
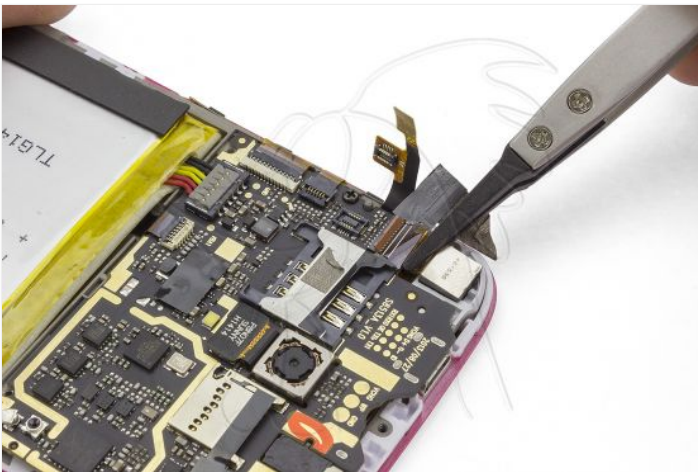
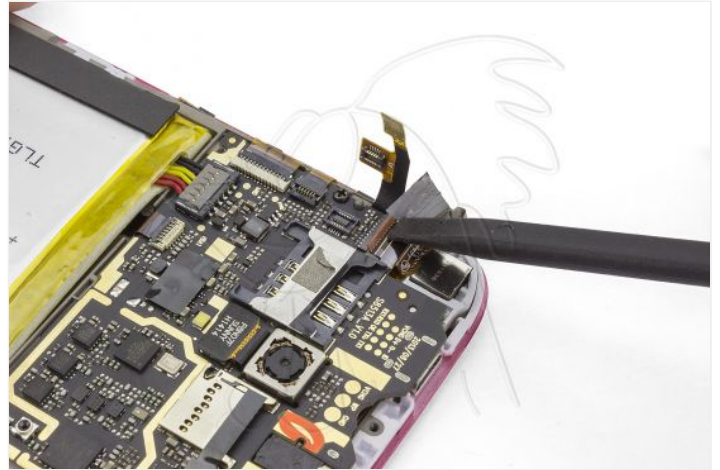
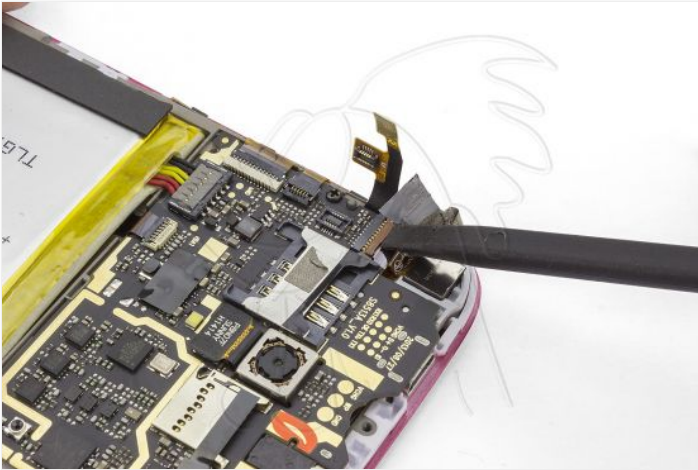
Remove the adhesive covering the front chamber.





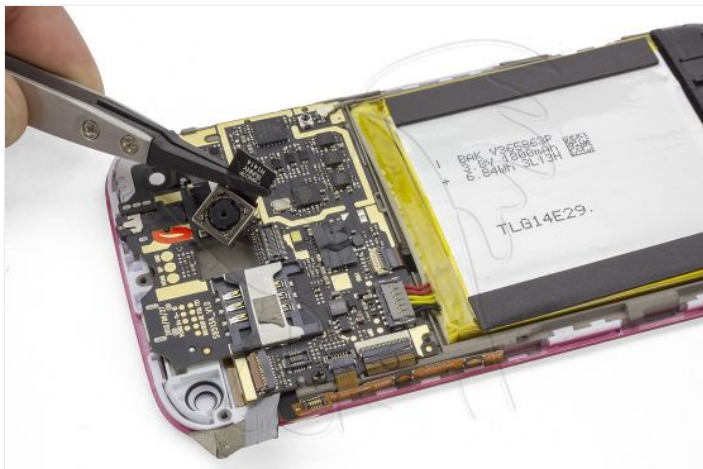
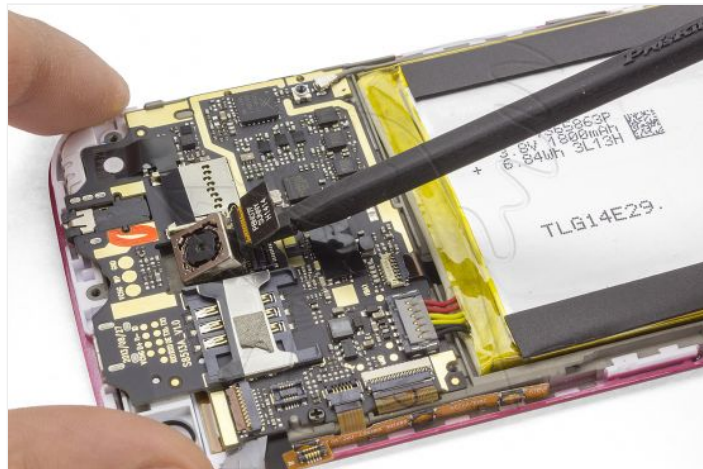
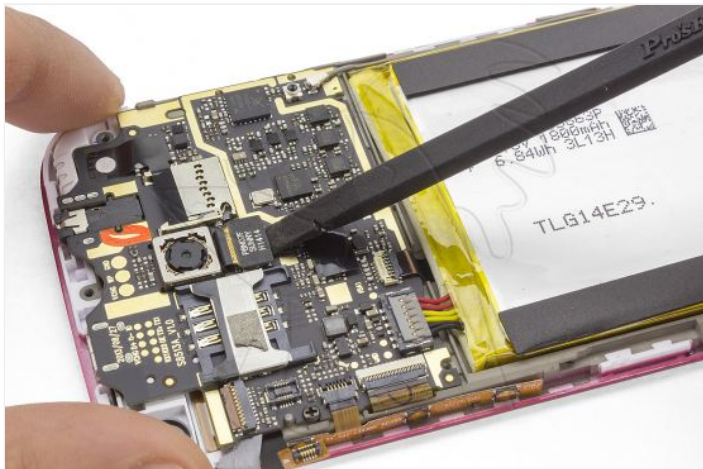
Step 8 - Front camera

Disconnect the front camera, by pulling on the tab of the connector and pulling gently.



Step 9 - Rear camera

Unplug and remove the rear camera.

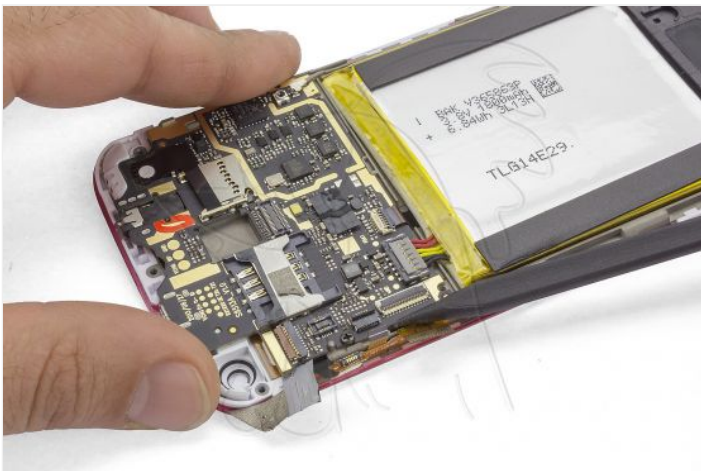
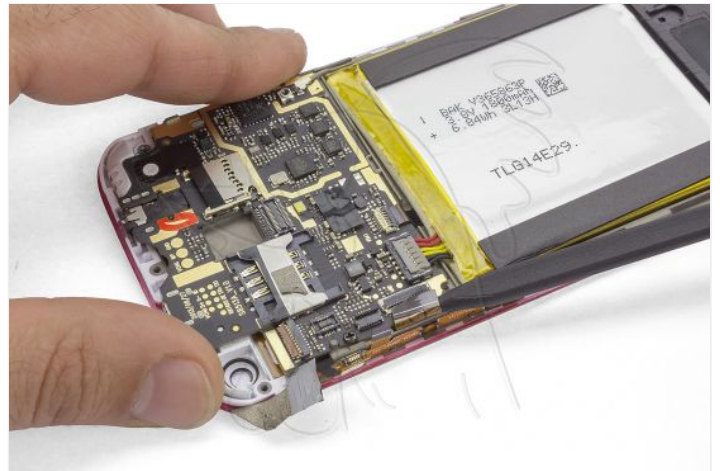
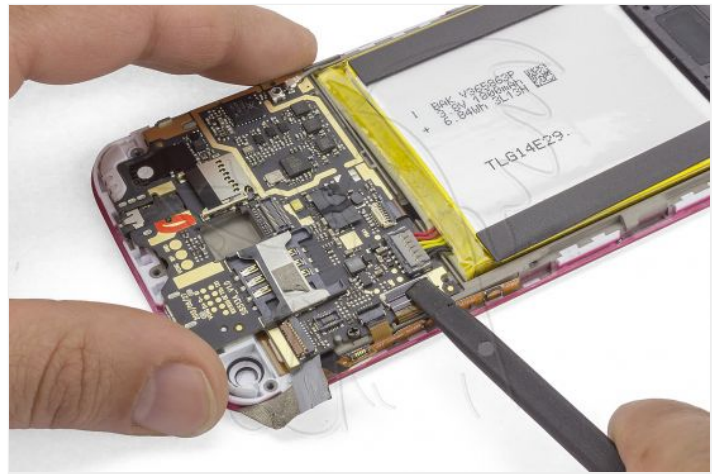
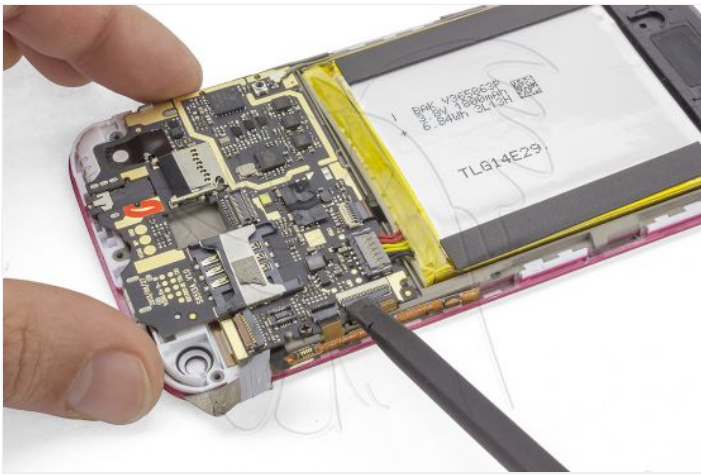


Step 10 - Motherboard connections

Disconnect the flex from the volume and ignition pushbuttons.

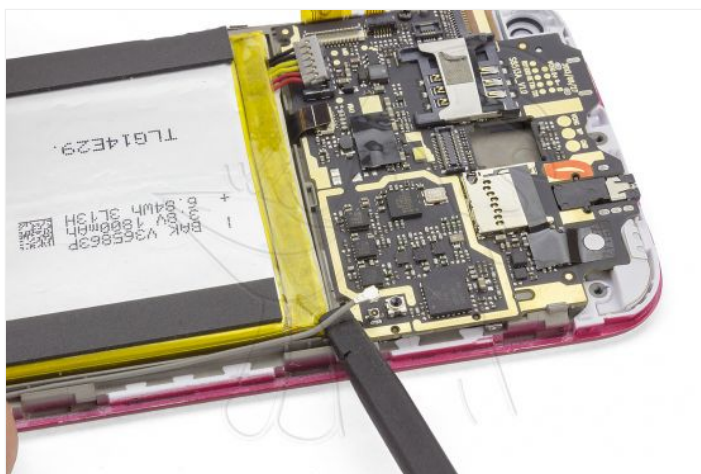
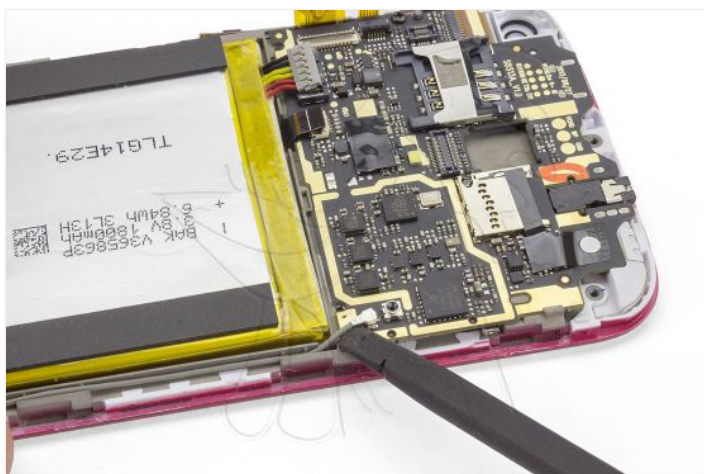
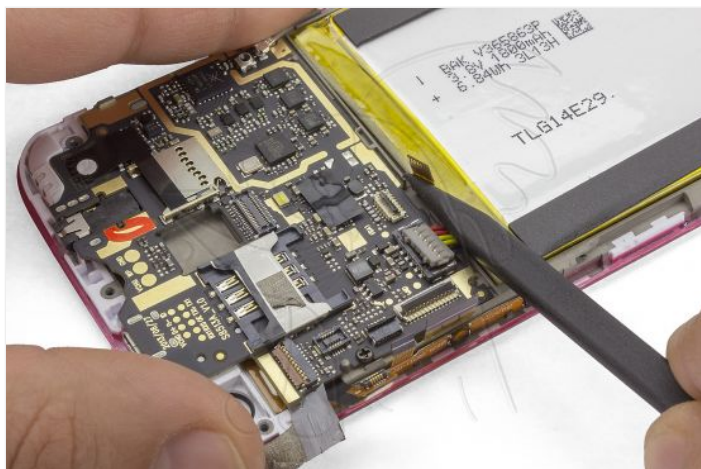
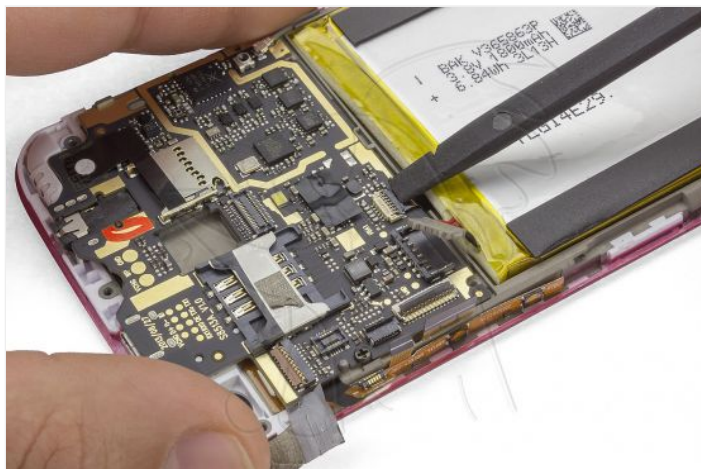
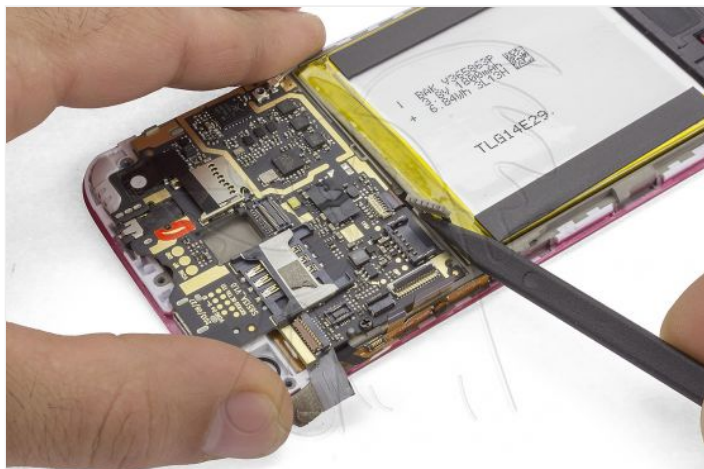
Disconnect the LCD data flex.





Step 11

Unplug the battery and the upper end of the antenna coaxial cable.



Step 12

Remove the Phillips screw that secures the motherboard.

Separate the base plate, prying gently.



Step 13 - GPS antenna

Finally, separate the GPS antenna, located in one of the upper corners.



